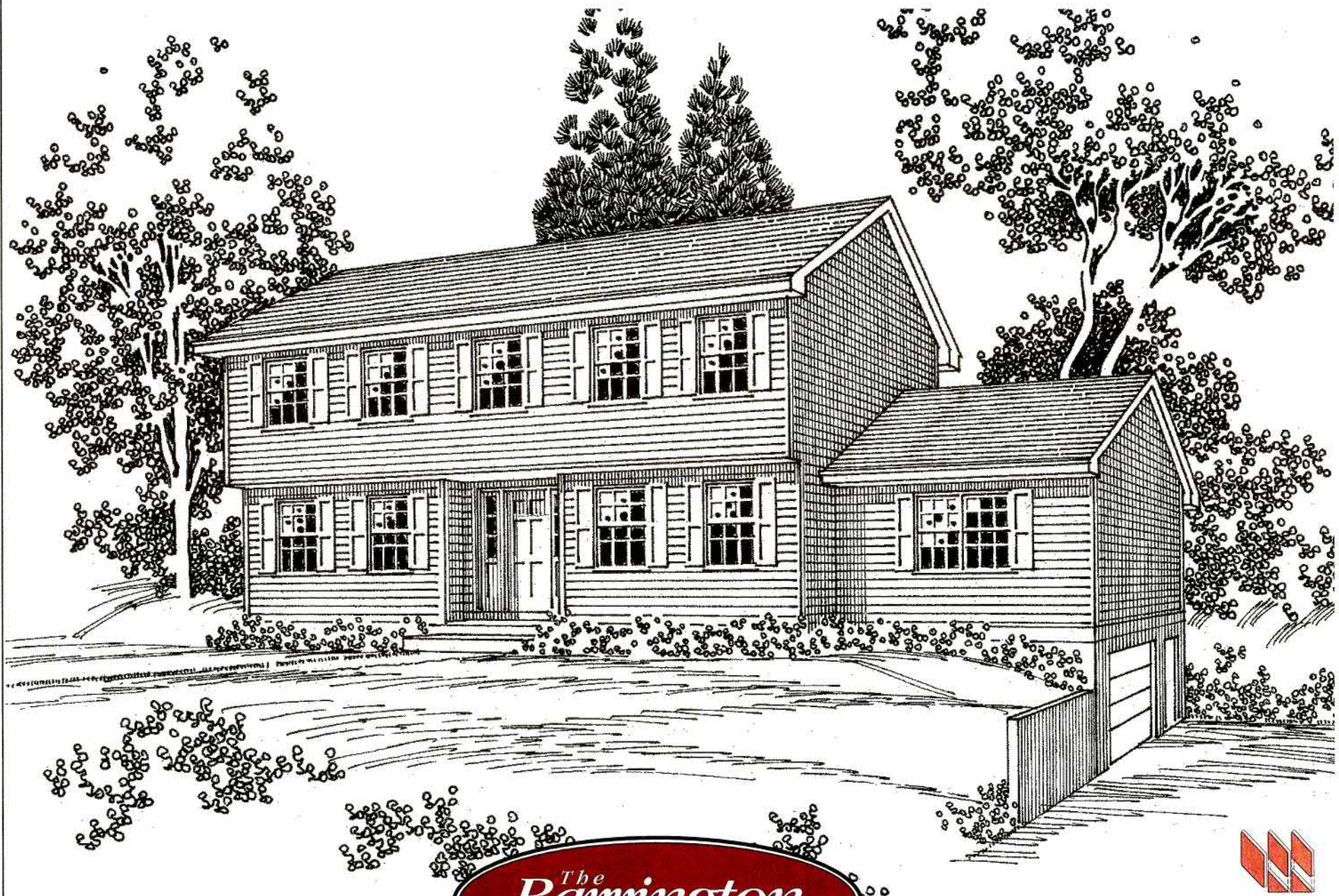
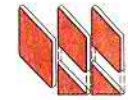


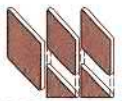
WESTCHESTER MODULAR HOMES



The
Barrington



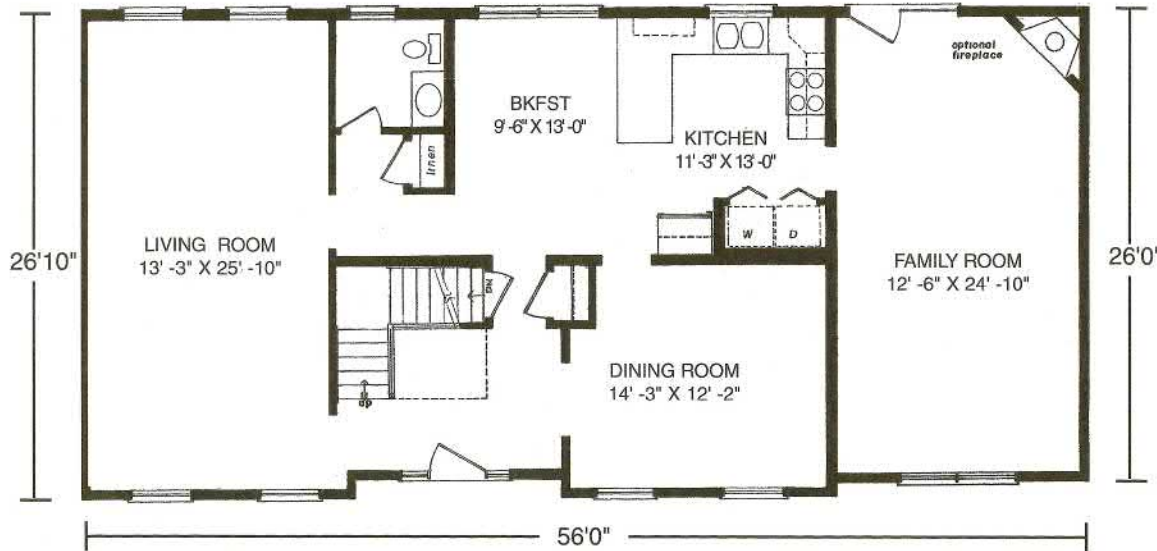
The Barrington



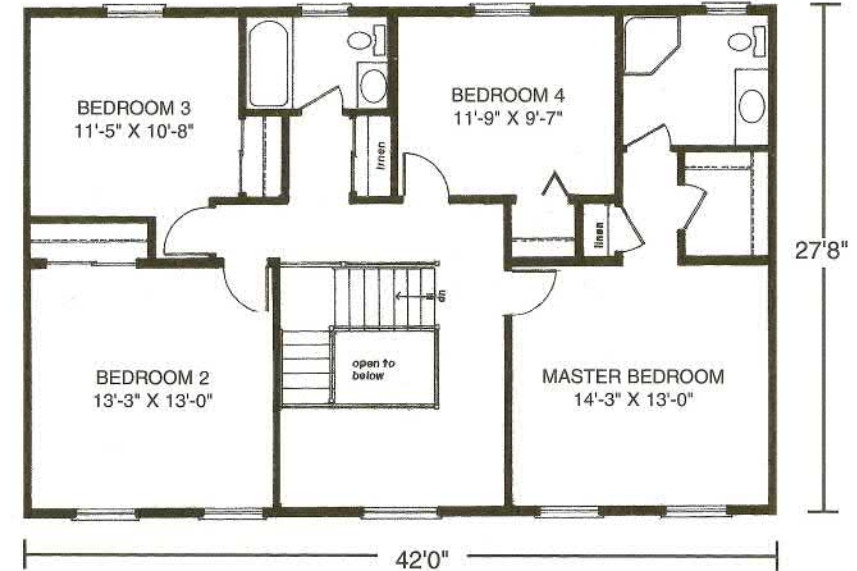
26'10"/26' x 56' • 2647 Sq. Ft.
Second Floor - 27'8" x 42'

Westchester Modular Homes

First Floor



Second Floor



Columbia Home Solutions - Hudson Valley Home Builder since 1985 - www.Columbia-Home-Solutions.com

Standard Barrington Features

- 4 Spacious Bedrooms
- 2 1/2 Baths
- Open Two-Story Entry Foyer
- Formal Dining Room
- Formal Living Room
- Country Kitchen with Breakfast Room
- Recessed Front Entry
- Fireplace Options Available
- "Boxed-out" and "Angle-Bay" Options Available
- Consult an Authorized Westchester Builder for a Complete List of Options
- Artist's renderings and Floor Plan Dimensions are approximate. All specifications must be Written in the Contract. No oral conditions.



Featuring Quality Andersen® Products

Columbia HOME SOLUTIONS
Hudson Valley Home Builder Since 1985
www.Columbia-Home-Solutions.com

INDEPENDENT AUTHORIZED BUILDER
WESTCHESTER MODULAR HOMES, INC.
AN EMPLOYEE OWNED COMPANY

1094 County Rt 6
Germantown, NY 12526
518-537-68888