

W E S T C H E S T E R
C O M M E M O R A T I V E
S E R I E S



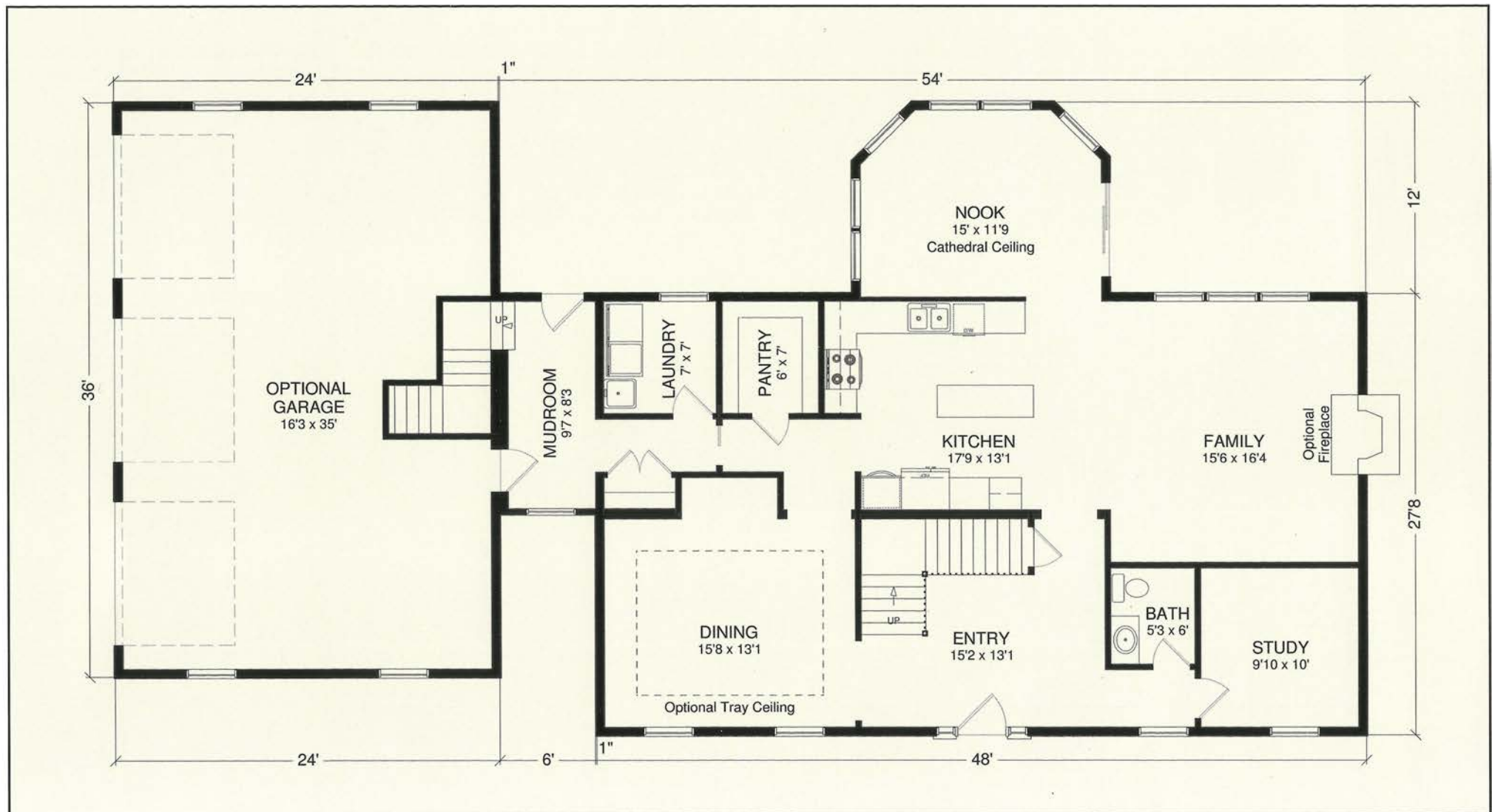
THE BOSTONIAN



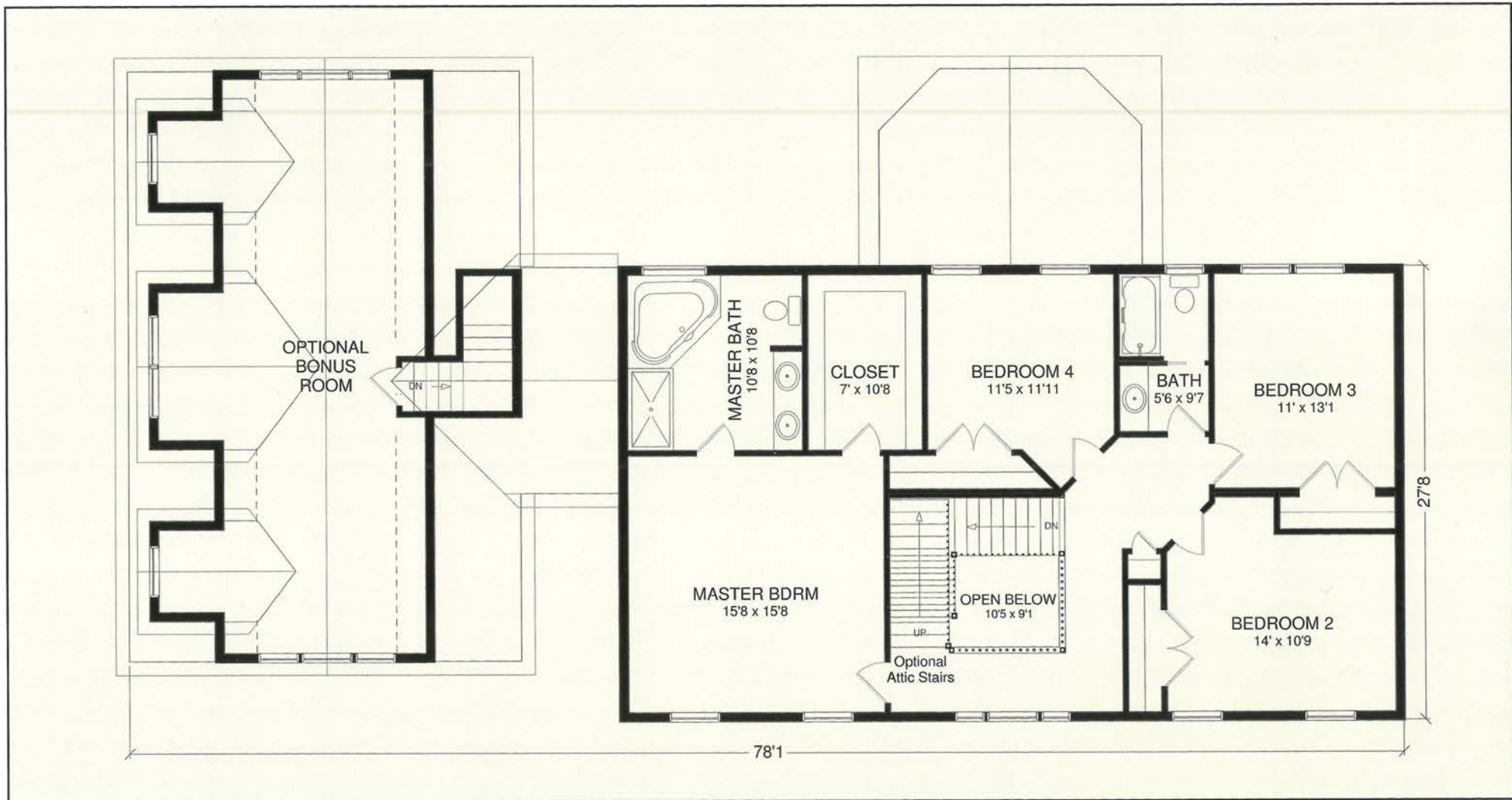
WESTCHESTER MODULAR HOMES, INC.
AN EMPLOYEE OWNED COMPANY

Westchester Bostonian Floor Plans

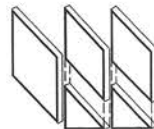
First Floor



Second Floor



2,945 Square Feet
(not including bonus room)



WESTCHESTER MODULAR HOMES, INC.
AN EMPLOYEE OWNED COMPANY

Columbia HOME SOLUTIONS
Hudson Valley Home Builder Since 1985

www.Columbia-Home-Solutions.com

INDEPENDENT AUTHORIZED BUILDER
WESTCHESTER MODULAR HOMES, INC.
AN EMPLOYEE OWNED COMPANY

1094 County Rt 6
Germantown, NY 12526
518-537-68888

*Floor plans and elevations are artist's renderings only.
Room dimensions and square footage are approximates only.
Consult your independent builder for more details.*

Featuring Quality
Andersen® Products

Andersen® WINDOWS • DOORS 

COMMEMORATIVE

S E R I E S

UPGRADED BOSTONIAN FEATURES

Luxury and Superior Quality are the most defining features of Westchester Modular Homes' Commemorative Series.

The Commemorative Series comes equipped with the following upgraded options at no additional charge. With this Series, the most discriminating home buyer will enjoy a home of lasting value.

- 9/12 roof pitch with low profile "shingle over" ridge vent
- Transom windows on first floor front elevation
- Andersen Triple window in open foyer
- Merillat "Seneca Ridge Oak" Kitchen Cabinets featuring:
 - 42" wall cabinets
 - Open soffit with crown moulding
 - Walk in pantry
 - Double oven cabinet
 - Wood range hood
 - 6' island bar
 - Peninsula bar with raised countertop
 - Pantry cabinets
- Semi-solid six panel masonite interior doors
- 3 1/2" colonial casing and 5 1/4" baseboard moulding
- Cathedral Ceiling in breakfast nook
- 9' first floor ceiling height
- Thermatru Fiber-Classic 6 panel front entry door with sidelights and transom
- Master Bath featuring:
 - Jacuzzi® brand whirlpool bath
 - Awning and circle top windows over tub
 - Separate 60" shower stall
 - His and hers vanity plus linen vanity cabinet
- Oak tread stairs with oak rails
- "Best" lighting package by Seagull



Columbia HOME SOLUTIONS
Hudson Valley Home Builder Since 1985
www.Columbia-Home-Solutions.com

INDEPENDENT AUTHORIZED BUILDER
WESTCHESTER MODULAR HOMES, INC.
AN EMPLOYEE OWNED COMPANY

1094 County Rt 6
Germantown, NY 12526
518-537-68888



WESTCHESTER MODULAR HOMES, INC.
AN EMPLOYEE OWNED COMPANY

Featuring Quality
Andersen® Products

WINDOWS • DOORS
Andersen® 



*Please consult with your independent builder for a complete list of standard upgrades in this model.
Standard features and specifications are subject to change without notice.
Photo on front cover is shown with optional features.*

11/14

