

WESTCHESTER MODULAR HOMES

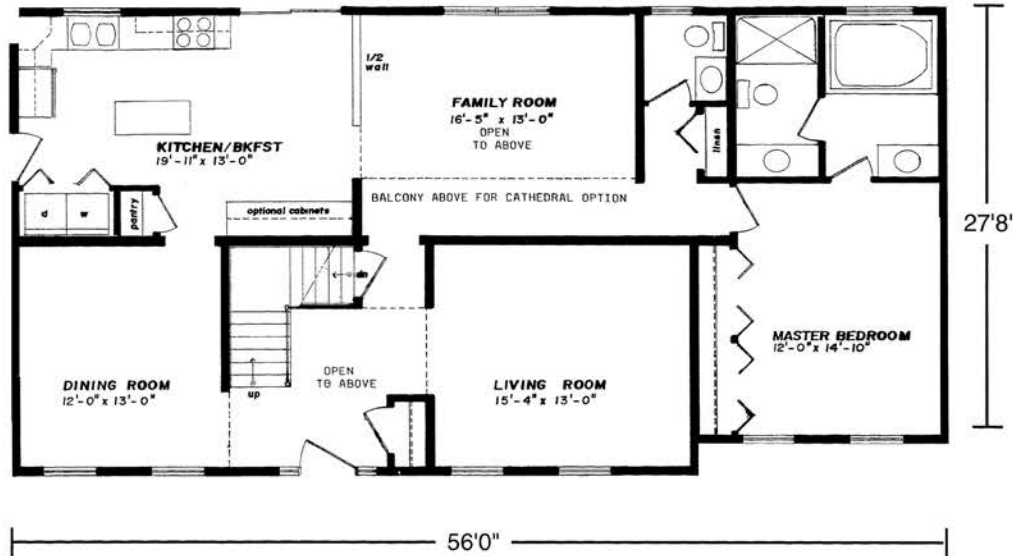




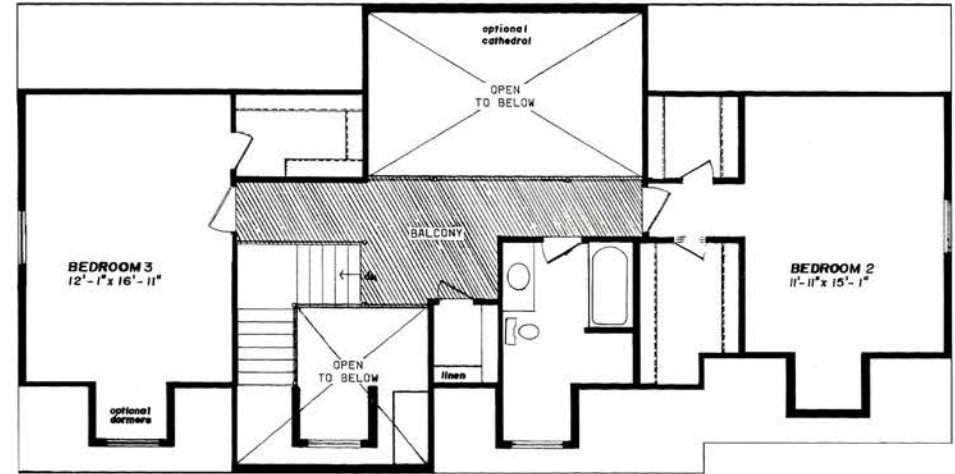
27'8" x 56' • 1568 Sq. Ft.

Unfinished Second Floor - 16' x 56' • 896 Sq. Ft.

First Floor



Second Floor (suggested layout)



Columbia Home Solutions - Hudson Valley Home Builder since 1985 - www.Columbia-Home-Solutions.com

Standard Chatham Features

- Luxurious First Floor Master Suite Private Bath Includes: Jacuzzi Tub, Shower and Double Vanities.
- First Floor Half Bath
- Open Two-Story Entry Foyer with Cathedral
- Formal Dining Room
- Formal Living Room
- Spacious Island Kitchen, Pantry and Utility Closet
- Unfinished Second Floor for Future Expansion to Include 4-30/46 Windows; Cage Rail for Open Entry in Lieu of Wall Panels and Door for Top of Stairs.
- "Cottage-Style" 3056 Lower Level Windows on Front
- Fireplace Options Available
- "Boxed-out" and "Angle-Bay" Options Available
- Consult an Authorized Westchester Builder for a Complete List of Options
- Photos and Floor Plan Dimensions are approximate. All specifications must be Written in the Contract. No oral conditions.



We Build Green!

Featuring High-Quality Andersen® Products



Hudson Valley Home Builder Since 1985

www.Columbia-Home-Solutions.com



1094 County Rt 6
Germantown, NY 12526
518-537-68888