

WESTCHESTER
COMMEMORATIVE
SERIES



THE GEORGETOWN



WESTCHESTER MODULAR HOMES, INC.
AN EMPLOYEE OWNED COMPANY

COMMEMORATIVE
SERIES

Westchester Modular Homes
Georgetown Floor Plans

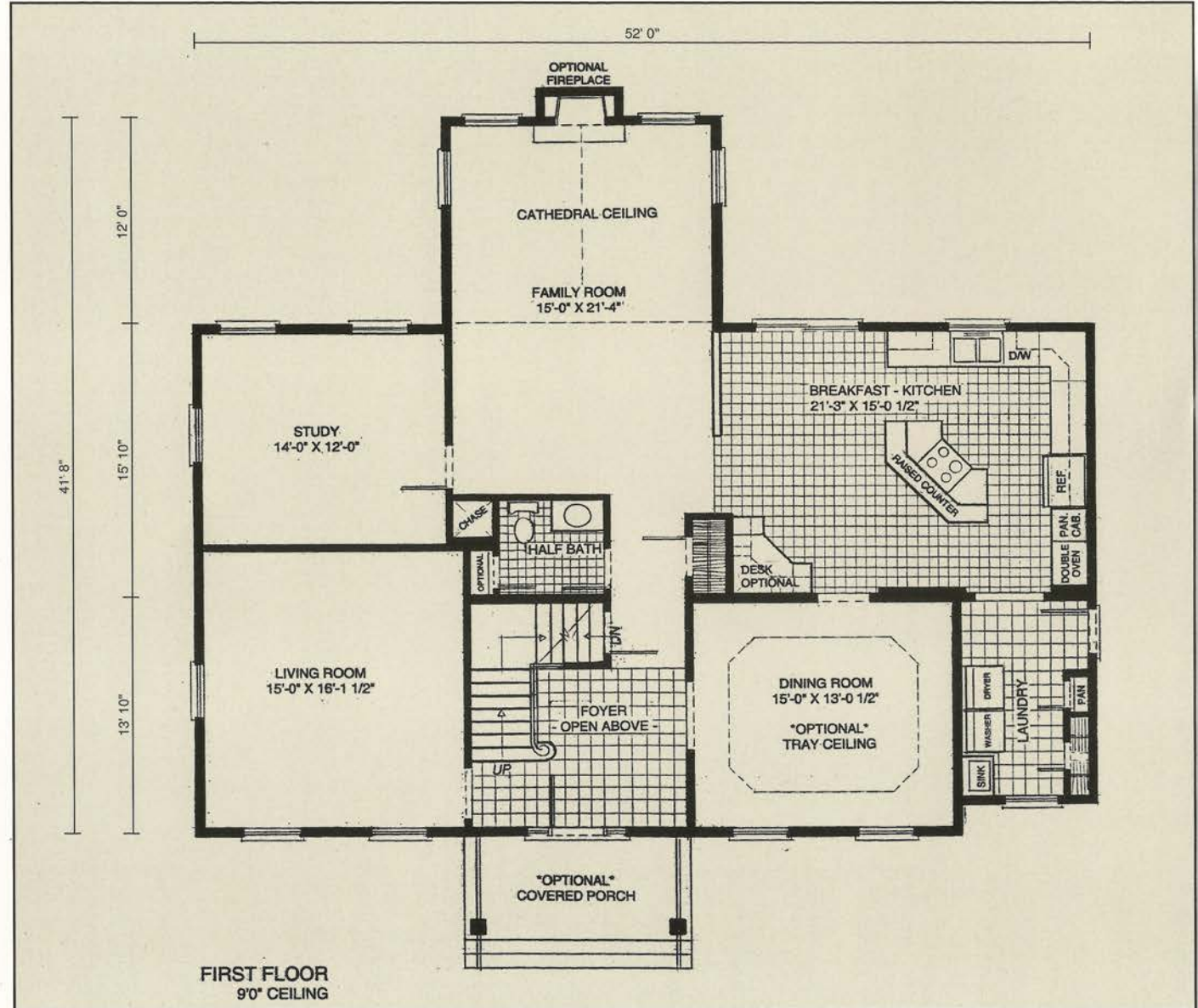
First Floor

An American tradition continues as the Georgetown pays tribute to our country's impressive colonial architecture. Reflecting the elegant design and subtle grace of the 18th century, the Georgetown dramatically combines colonial design with an open, modern floor plan.

When touring this home, you'll be notably impressed by the grandeur of its stately roof accented by A-dormers. As you enter into the heart of the home, a large family room with a true cathedral ceiling welcomes you.



There's also a spacious breakfast room and modern kitchen boasting a large



working center island and sit-down bar.

To the left, beyond the family room, lies a study that can be easily transformed into a private den or home office. Just off the entry foyer is the living room and dining area for more formal entertaining.

Upstairs, the second floor hallway is trimmed with an oak railing allowing you to look down into the foyer below. The dominant feature on the second floor is the large master bedroom suite with

Featuring High-Quality Andersen® Products

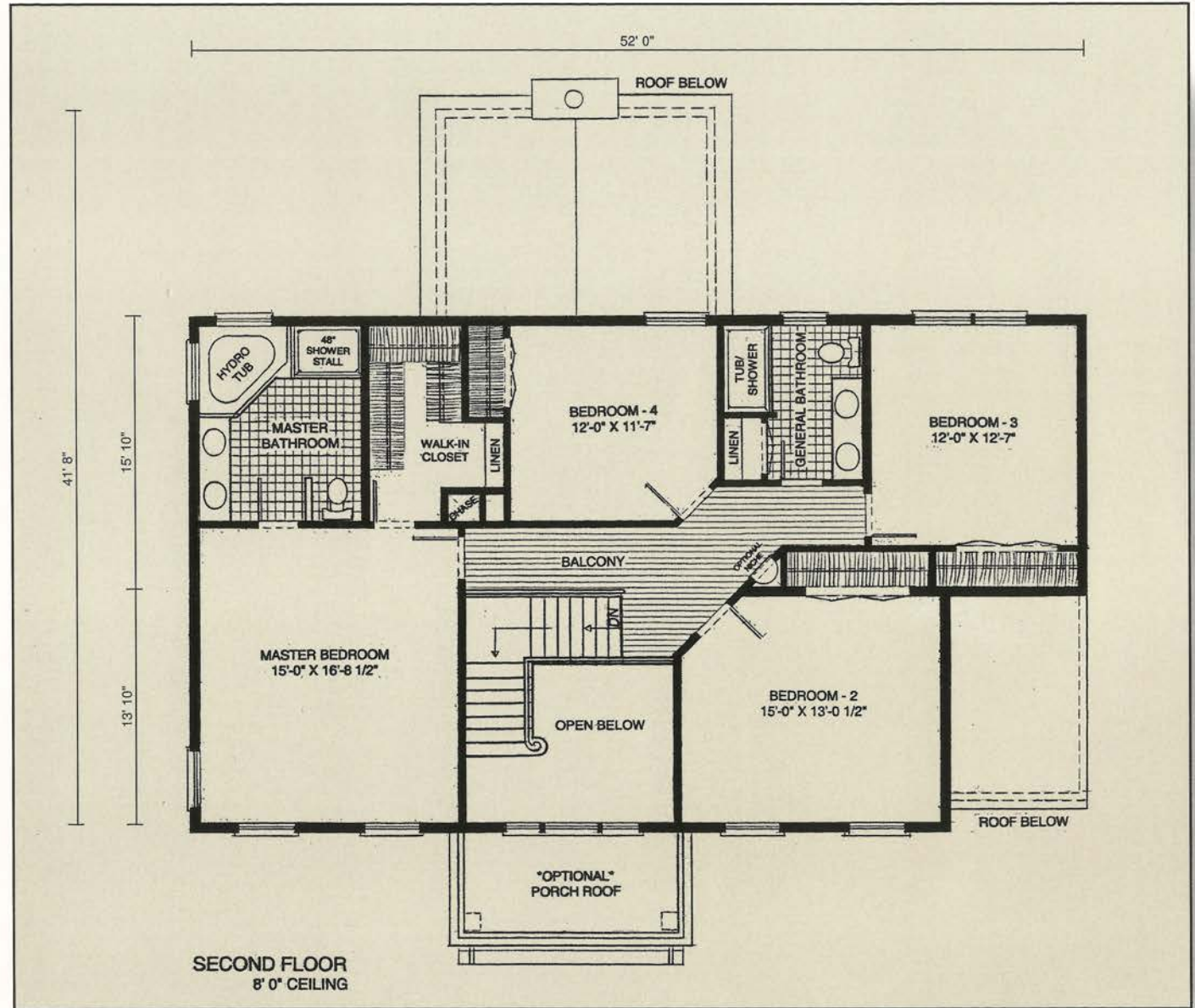


a walk-in closet and luxurious bath featuring a whirlpool tub surrounded by large Andersen® energy efficient windows.



The spacious and functional design of the Georgetown embraces many of the ideas brought to us by our valued customers. To that end, this home was built with you in mind.

Second Floor



3,200 Square Feet

Floor plans and elevations are artist's renderings only. Room dimensions and square footage are approximates only. Consult your independent authorized builder for more details.

1094 County Rt 6
Germantown, NY 12526
(518) 537-6888

Hudson Valley Home Builder Since 1985
www.Columbia-Home-Solutions.com

INDEPENDENT AUTHORIZED BUILDER
WESTCHESTER MODULAR HOMES, INC.
AN EMPLOYEE OWNED COMPANY

COMMEMORATIVE

S E R I E S

UPGRADED GEORGETOWN FEATURES

Luxury and Superior Quality are the most defining features of Westchester Modular Homes' Commemorative Series.

The Commemorative Series comes equipped with the following upgraded options at no additional charge. With this Series, the most discriminating home buyer will enjoy a home of lasting value.

- 9/12 roof with "A" Dormers and low profile "shingle over" ridge vent
- Triple Andersen® window in open foyer
- Merillat "Seneca Ridge Oak" Kitchen Cabinets Featuring:
 - 42" wall cabinets
 - Open soffit with crown moulding
 - Double oven and pantry cabinet
 - Working island bar with raised breakfast counter
 - Double hung and circle top window over kitchen sink
- True cathedral ceiling in Family Room
- Semi-solid six panel masonite interior doors
- 3 1/2" colonial casing and 5 1/4" baseboard moulding
- 9' first floor ceiling height
- Thermatru Fiber-Classic 6 panel front entry door with sidelights and transom
- Oak tread stairs with single volute and gooseneck rails
- Master Bath Featuring:
 - Jacuzzi® brand whirlpool bath
 - 3046T windows
 - Separate 48" shower stall
 - Double bowl vanity



WESTCHESTER MODULAR HOMES, INC.

AN EMPLOYEE OWNED COMPANY



Featuring High-Quality Andersen® Products

WINDOWS • DOORS
Andersen® 

Please consult your independent authorized builder for a complete list of standard upgrades in this model. Standard features and specifications are subject to change without notice.

 **Columbia**
HOME SOLUTIONS

Hudson Valley Home Builder Since 1985

www.Columbia-Home-Solutions.com

