

WESTCHESTER MODULAR HOMES



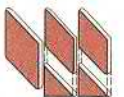
Elevation on front cover includes optional features.

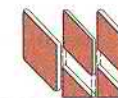


www.Columbia-Home-Solutions.com

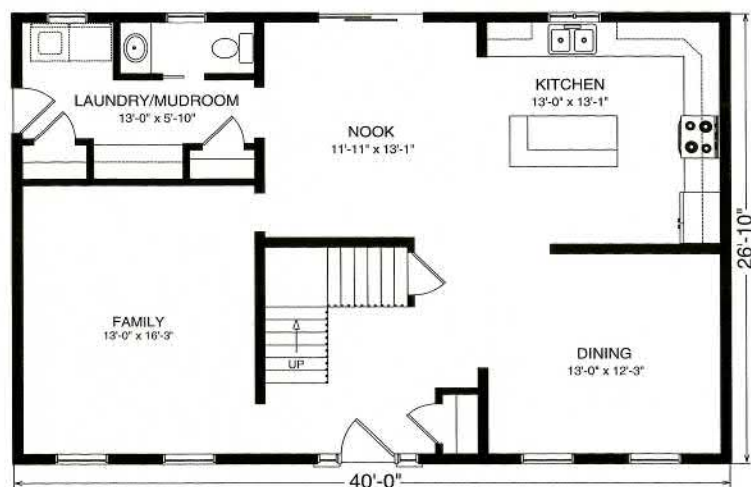

Columbia
HOME SOLUTIONS
Hudson Valley Home Builder Since 1985

*Two Story Colonial
Home Plans*

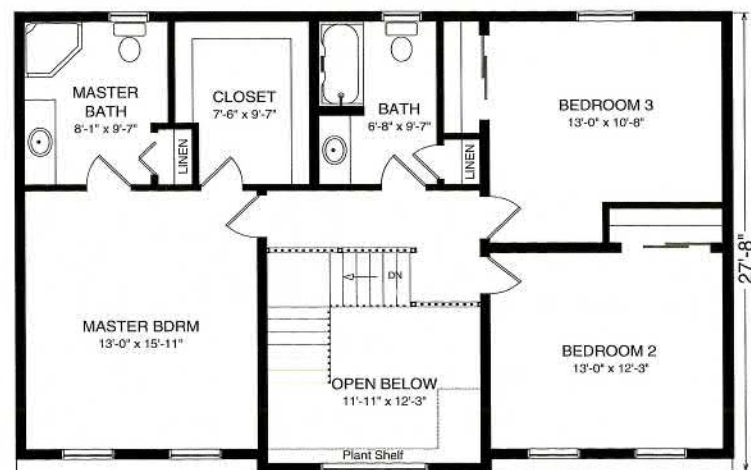
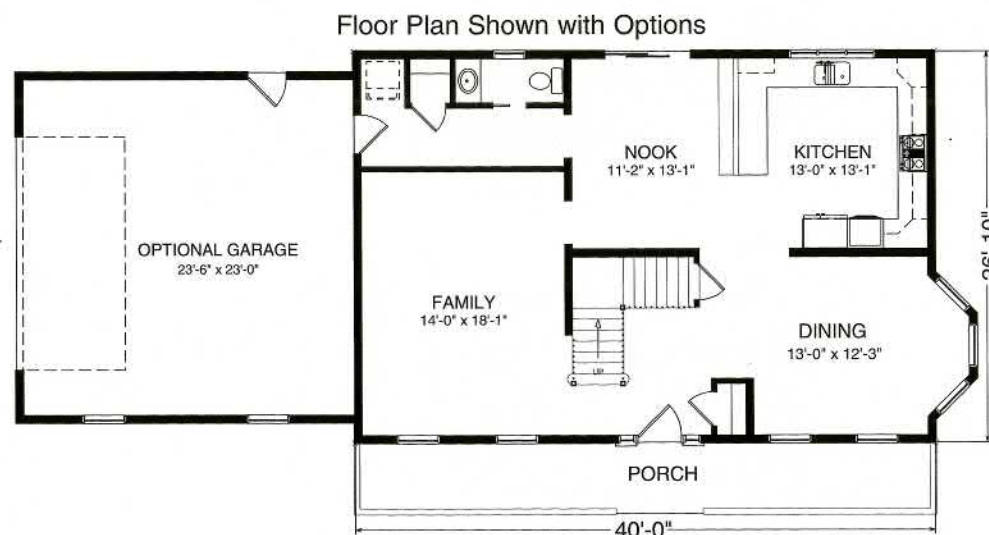




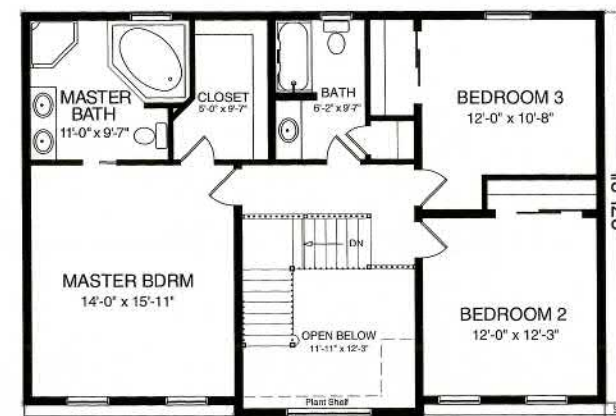
2200 Sq. Ft.



First Floor



Second Floor



Standard Mayfield Features

- Kitchen features:
 - Raised Panel oak cabinetry with laminate countertop
 - Open soffit
 - Large center island with overhang top
 - Casement window over kitchen sink
- Mud room includes:
 - Laundry area with washer dryer hookups
 - "Drop off center" with storage cabinets and pantry closets
 - Half bath with 36" vanity cabinet
- Two story open foyer with oak stair rails
- Exterior features:
 - Front entry door with double sidelights and optional transom
 - Picture framed windows on front elevation
 - Reverse gable over large open entry window
 - Cottage style 3056 windows on the front lower level
- Oversized master bedroom
 - Large walk in closet
 - Master bath includes corner shower and 60" vanity
- Optional Features:
 - Walk-out angle bay in dining room
 - 9' lower level ceilings
 - 7/12 roof pitch
 - Optional master bath layout with Corner Jacuzzi
 - Optional kitchen layout with additional windows and breakfast bar
- Artist's Renderings and Floor Plan Dimensions are approximate. All specifications must be Written in the Contract. No oral conditions.



We Build Green!



Hudson Valley Home Builder since 1985
www.Columbia-Home-Solutions.com

Featuring High-Quality
 Andersen® Products
Andersen

INDEPENDENT AUTHORIZED BUILDER
WESTCHESTER MODULAR HOMES, INC.
 AN EMPLOYEE OWNED COMPANY

1094 County Rt 6
 Germantown, NY 12526
 518-537-68888