

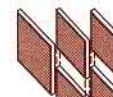


*Shown with optional two-car garage and porch package.*

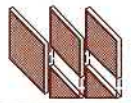


*Shown with optional two-car garage, "Angle Bay" and optional front door.*

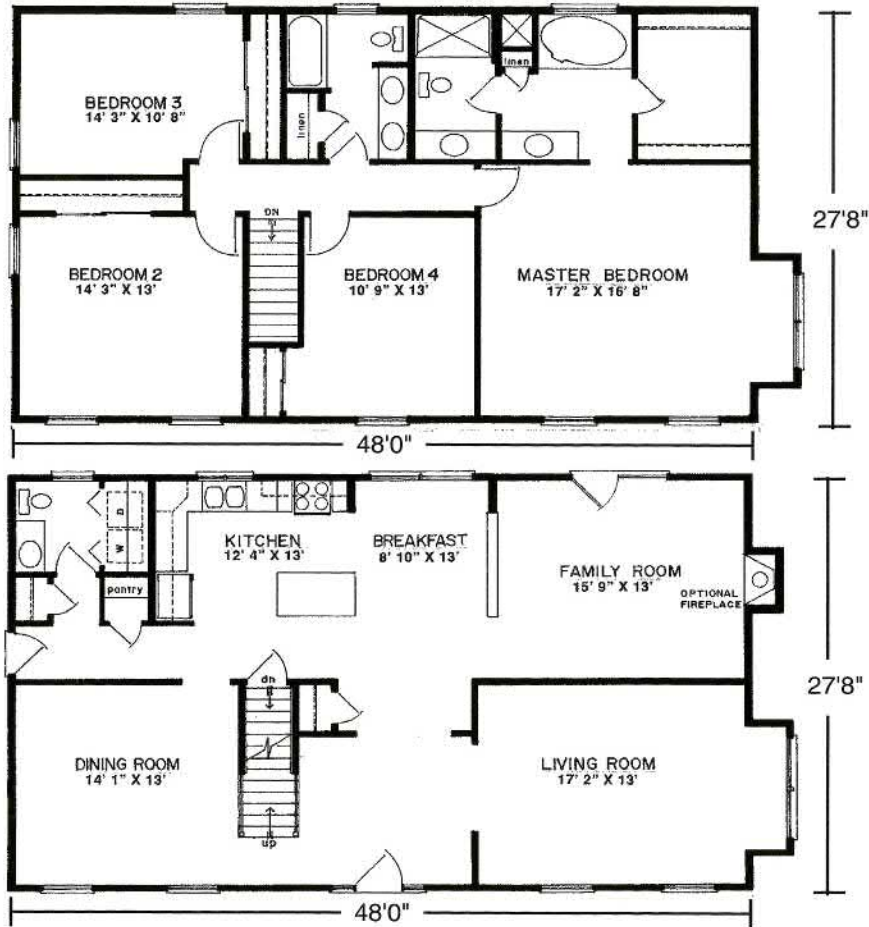
*The*  
**Newport**





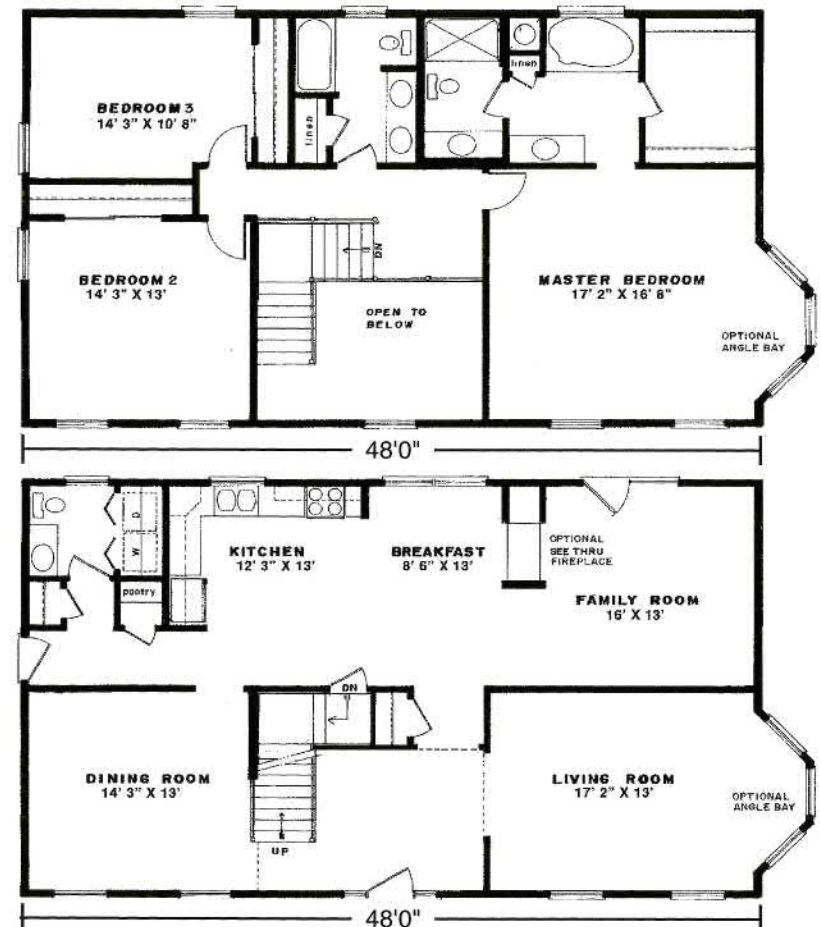


27'8" x 48' • 2688 Sq. Ft.  
Boxed-out Bay • 45 Sq. Ft.



Second Floor

First Floor



## Standard Newport Features

- 3 or 4 Spacious Bedroom
- 2 1/2 Baths
- Open Two-Story Entry Foyer on 3-Bedroom Model
- Formal Dining Room
- Formal Living Room
- "Acorn" Pediment on Front Door
- Spacious Kitchen features Island and Pantry
- "Cottage-Style" 3056 Lower Level Windows with Architraves on Front
- Fireplace Options Available
- "Boxed-out Bay" on First and Second Floor. "Angle-Bay" Options Available.
- Consult an Authorized Westchester Builder for a Complete List of Options
- Artist's renderings and Floor Plan Dimensions are approximate. All specifications must be Written in the Contract. No oral conditions.



We Build Green!

Featuring High-Quality  
Andersen® Products



Hudson Valley Home Builder since 1985  
[www.Columbia-Home-Solutions.com](http://www.Columbia-Home-Solutions.com)



1094 County Rt 6  
Germantown, NY 12526  
518-537-6888