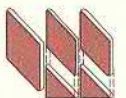




Photo shown with optional features not included in base price.



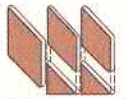
Hudson Valley Home Builder since 1985
www.Columbia-Home-Solutions.com



Two Story Colonial
Home Plans

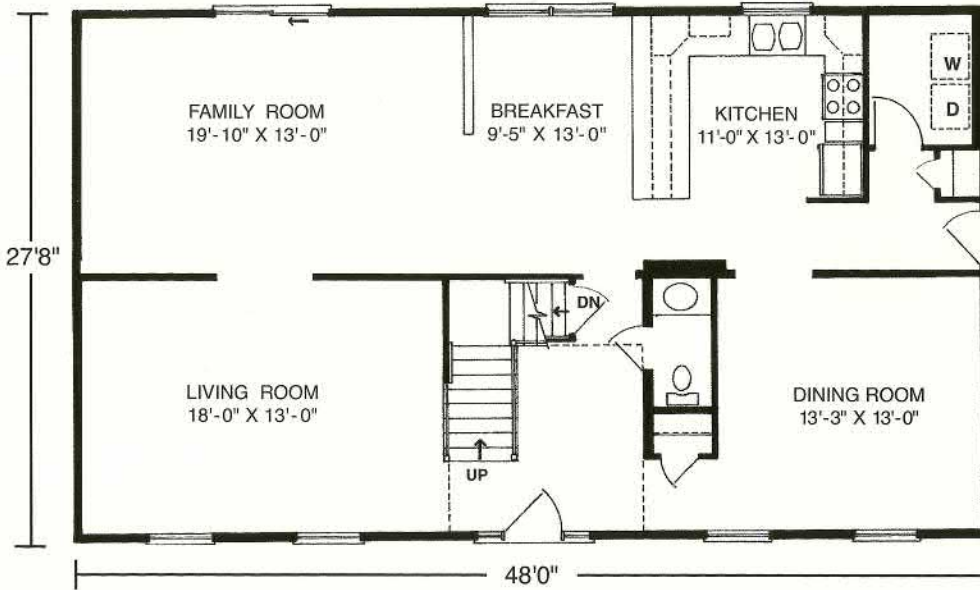
The Scarsdale II

Westchester Modular Homes

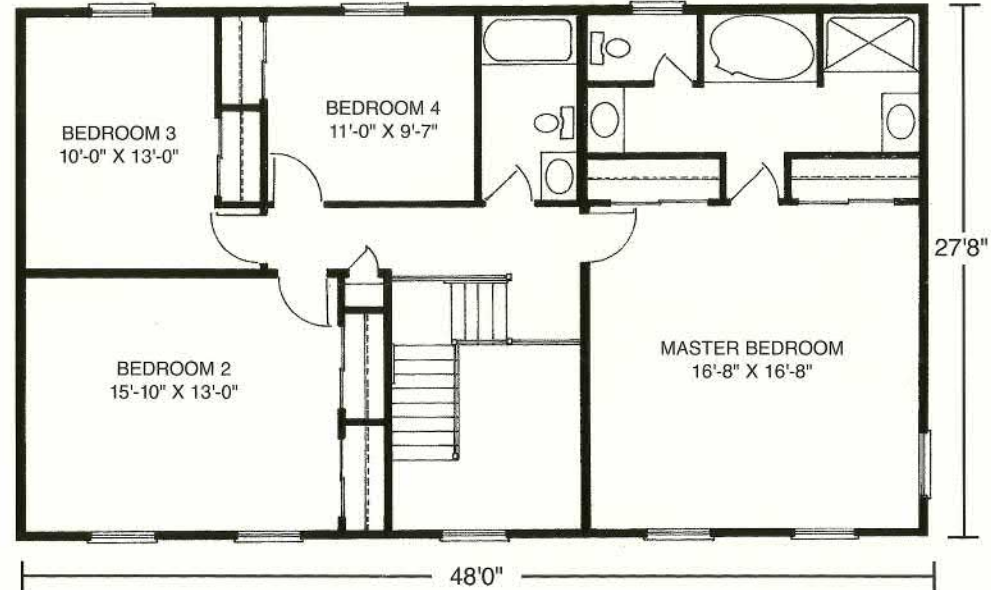


27'8" x 48' • 2688 Sq. Ft.

First Floor



Second Floor



Columbia Home Solutions - Hudson Valley Home Builder since 1985 - www.Columbia-Home-Solutions.com

Standard Scarsdale II Features

- 4 Spacious Bedrooms
- 2 1/2 Baths
- Open Two-story Entry Foyer
- Formal Dining Room
- Formal Living Room
- Spacious Country Kitchen with Breakfast Room and Pantry
- Framingham Pediment on Front Door
- “Cottage Style” 3056 Lower Level Front Windows with Architraves on Front
- Fireplace Options Available
- “Boxed-Out” and “Angle-Bay” Options Available
- Consult an Authorized Westchester Builder for a Complete List of Options
- Artist’s renderings and Floor Plan Dimensions are approximate. All specifications must be Written in the Contract. No oral conditions.



Featuring High-Quality Andersen® Products

Columbia HOME SOLUTIONS
 Hudson Valley Home Builder Since 1985
www.Columbia-Home-Solutions.com



1094 County Rt 6
 Germantown, NY 12526
 518-537-68888