

Westchester Modular Homes

W E S T C H E S T E R  
**COMMEMORATIVE**  
S E R I E S



**THE ARLINGTON**



**WESTCHESTER MODULAR HOMES, INC.**  
AN EMPLOYEE OWNED COMPANY

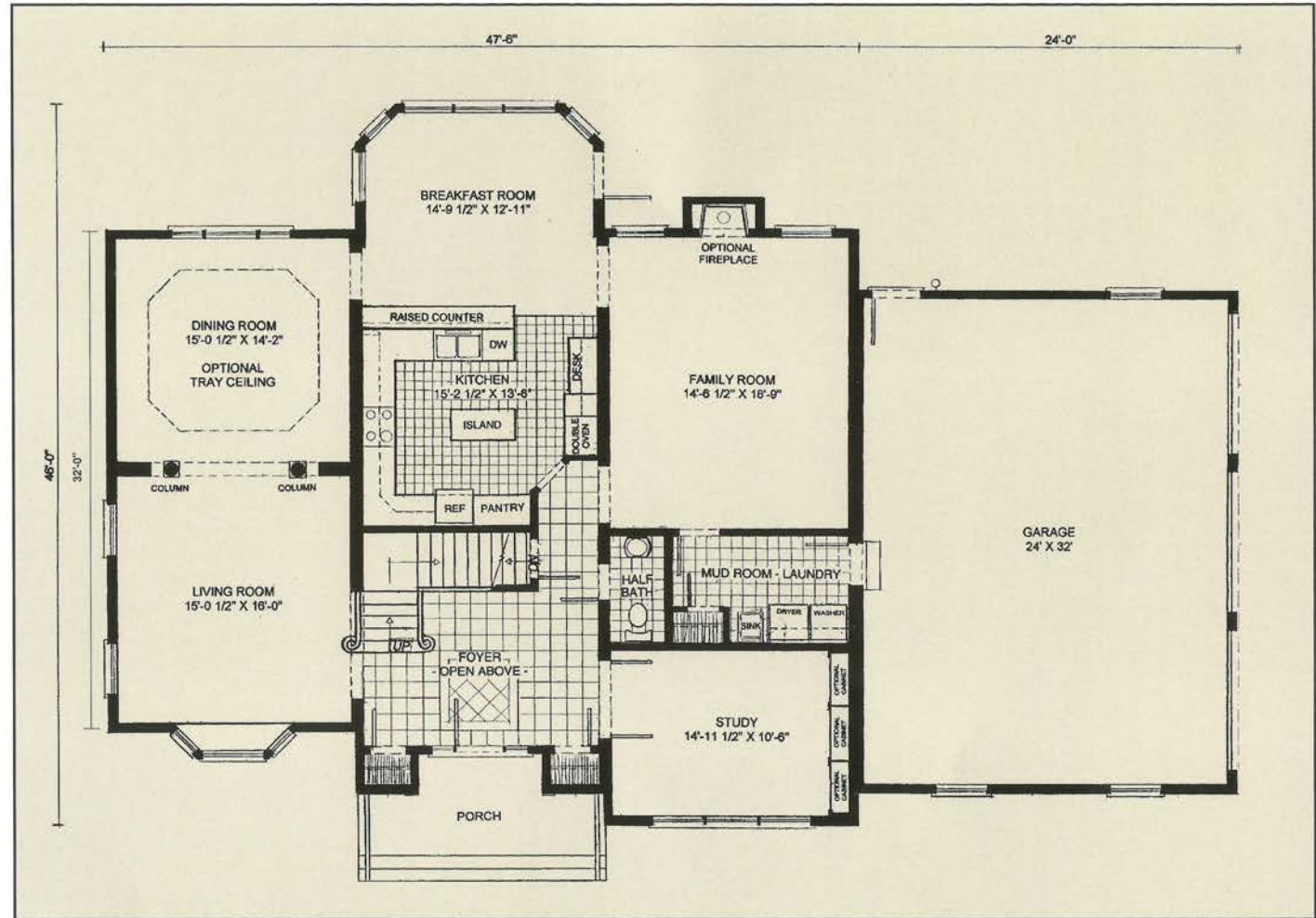
# COMMEMORATIVE SERIES

If a modern elevation complimented by an interior with luxurious amenities is what you are looking for, then the Arlington is a model you should seriously consider calling home. Extra wide modules create large living areas and an "over-sized" kitchen of your dreams. This spacious kitchen features 42" wall cabinets for extra storage, pantry cabinets, built-in desk area and casual breakfast bar. What an ideal use of space for a family with children or for the working couple who enjoys entertaining family and friends in the comfort of home.



# Westchester Modular Homes Arlington Home Floor Plans

## First Floor



Hudson Valley Home Builder since 1985  
[www.Columbia-Home-Solutions.com](http://www.Columbia-Home-Solutions.com)



For a growing number of our customers who work from home, the first floor study can be converted into a private office.

Other unique features include a master bath with large corner jacuzzi® tub,

Featuring High-Quality Andersen® Products



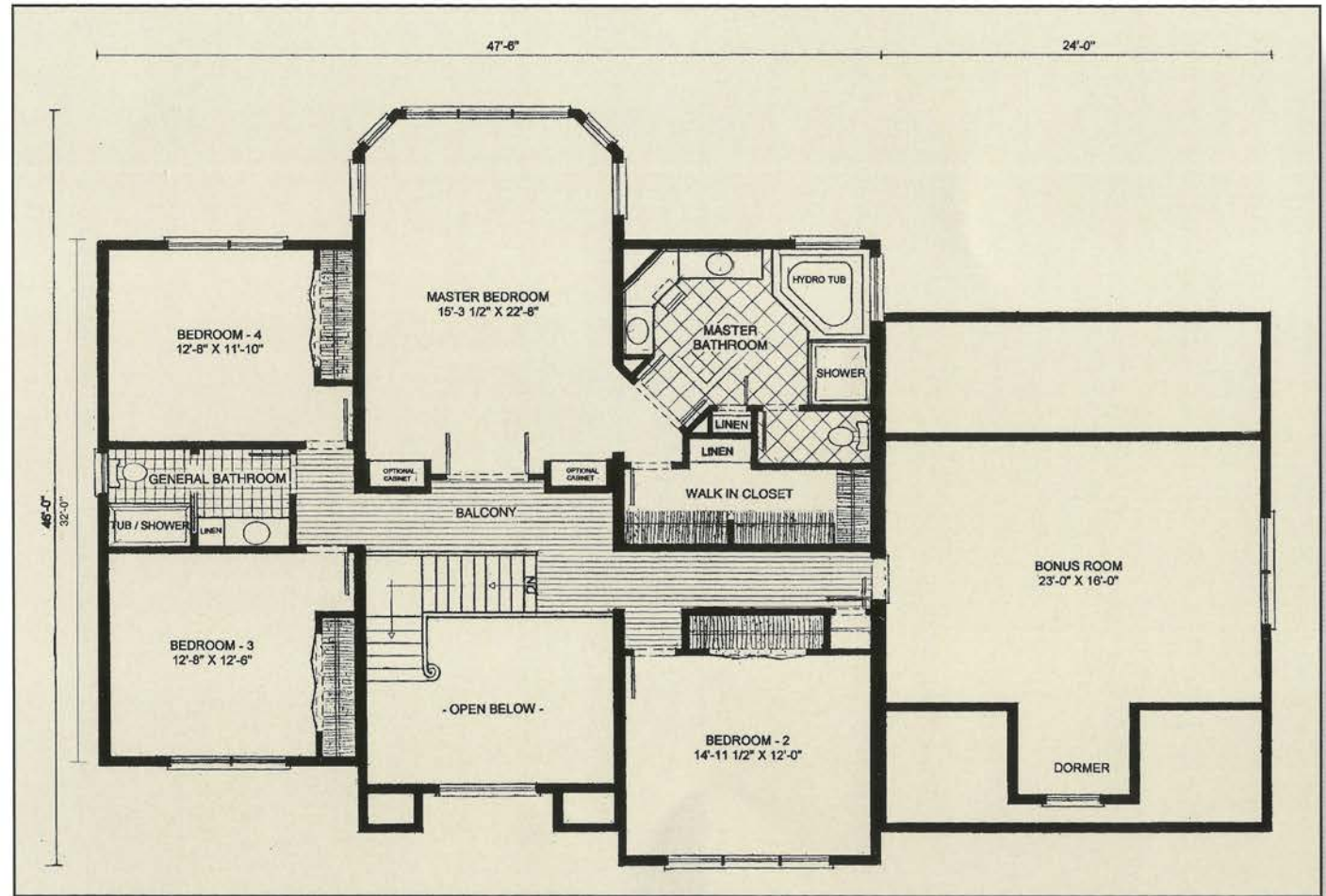
double Andersen® circle top windows, separate 48" shower stall, his & her double bowl vanity with mirror and corner dressing table accented by recessed ceiling lights.

In addition to abundant closet space in each bedroom, the Arlington is designed with an optional bonus room over the garage which can be easily converted to an additional bedroom or family media room.



*The Arlington elegantly provides a design solution for those families needing abundant living area and additional room to grow.*

## Second Floor



3,648 Square Feet  
(not including garage and bonus room)

*“Special attention was given by our engineering department to incorporate a high level of amenities into the overall design. When comparing new construction specifications, you’ll discover items that are normally listed as “optional” are standard with the Arlington model.”*



**WESTCHESTER MODULAR HOMES, INC.**  
AN EMPLOYEE OWNED COMPANY

*Floor plans and elevations are artist’s renderings only. Room dimensions and square footage are approximates only. Consult your independent authorized builder for more details.*

Columbia Home Solutions - Hudson Valley Home Builder since 1985 - [www.Columbia-Home-Solutions.com](http://www.Columbia-Home-Solutions.com)

# COMMEMORATIVE

# S E R I E S

## UPGRADED ARLINGTON FEATURES

*Luxury and Superior Quality are the most defining features of Westchester Modular Homes' Commemorative Series.*

*The Commemorative Series comes equipped with the following upgraded options at no additional charge. With this Series, the most discriminating home buyer will enjoy a home of lasting value.*

- 9/12 roof with low profile "shingle over" ridge vent
- Andersen® bay window with copper top roof in formal living room
- Andersen arch window in open foyer
- Merrillat® "Seneca Ridge Oak" Kitchen Cabinets featuring:
  - 42" wall cabinets
  - Open soffit with crown moulding
  - Desk and organizer
  - Double oven cabinet
  - 5' island bar
  - Peninsula bar with raised countertop
  - Pantry cabinets
- Semi-solid six panel masonite interior doors
- 3½" colonial casing and 5¼" baseboard moulding
- 9' first floor ceiling height
- Thermatru Fiber-Classic 6 panel front entry door with sidelights and transom
- Master Bath featuring:
  - Jacuzzi® brand whirlpool bath
  - Awning and circle top windows over tub
  - Separate 48" shower stall
  - His and hers vanity and dropped countertop with lap drawer
  - Dropped soffit over vanity and dressing table with recess lights
- Prefinished entrance and window trim
- Oak tread stairs with double volute and gooseneck rails

Featuring High-Quality Andersen® Products

WINDOWS • DOORS  
**Andersen**® 



*Please consult your independent authorized builder for a complete list of standard upgrades in this model. Standard features and specifications are subject to change without notice.*



**Columbia**  
**HOME SOLUTIONS**  
*Hudson Valley Home Builder Since 1985*  
www.Columbia-Home-Solutions.com

INDEPENDENT AUTHORIZED BUILDER  
**WESTCHESTER MODULAR HOMES, INC.**  
AN EMPLOYEE OWNED COMPANY

1094 County Rt 6  
Germantown, NY 12526  
518-537-6888