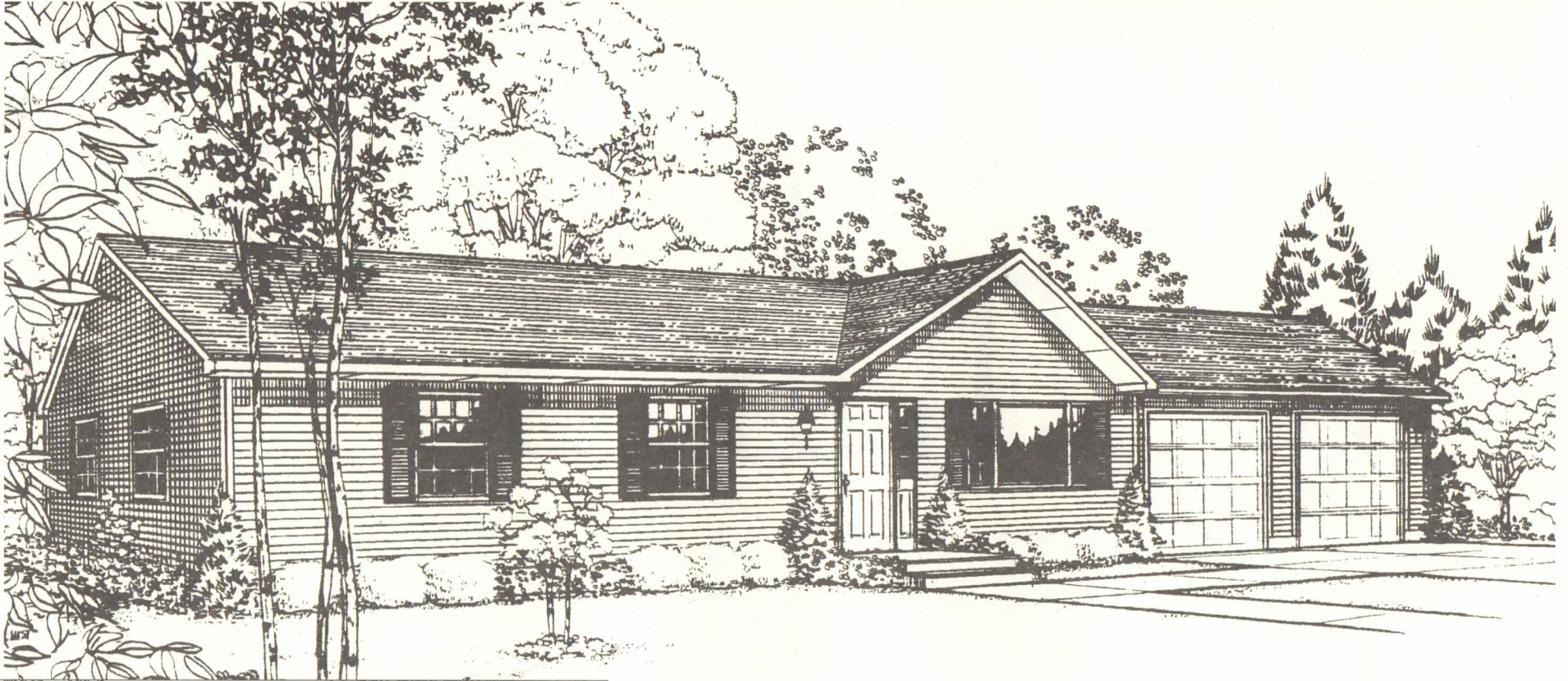
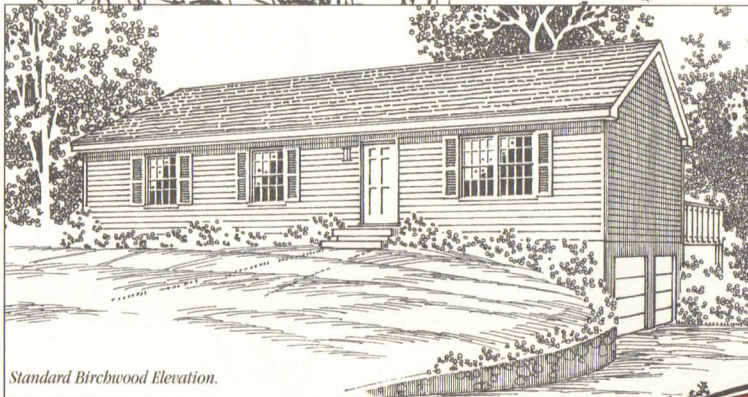


WESTCHESTER MODULAR HOMES



Shown with optional reverse gable, picture window, front door sidelite and two-car garage.



Standard Birchwood Elevation.

The
Birchwood

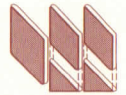

COLUMBIA
HOME SOLUTIONS

Hudson Valley Home Builder Since 1986

www.Columbia-Home-Solutions.com

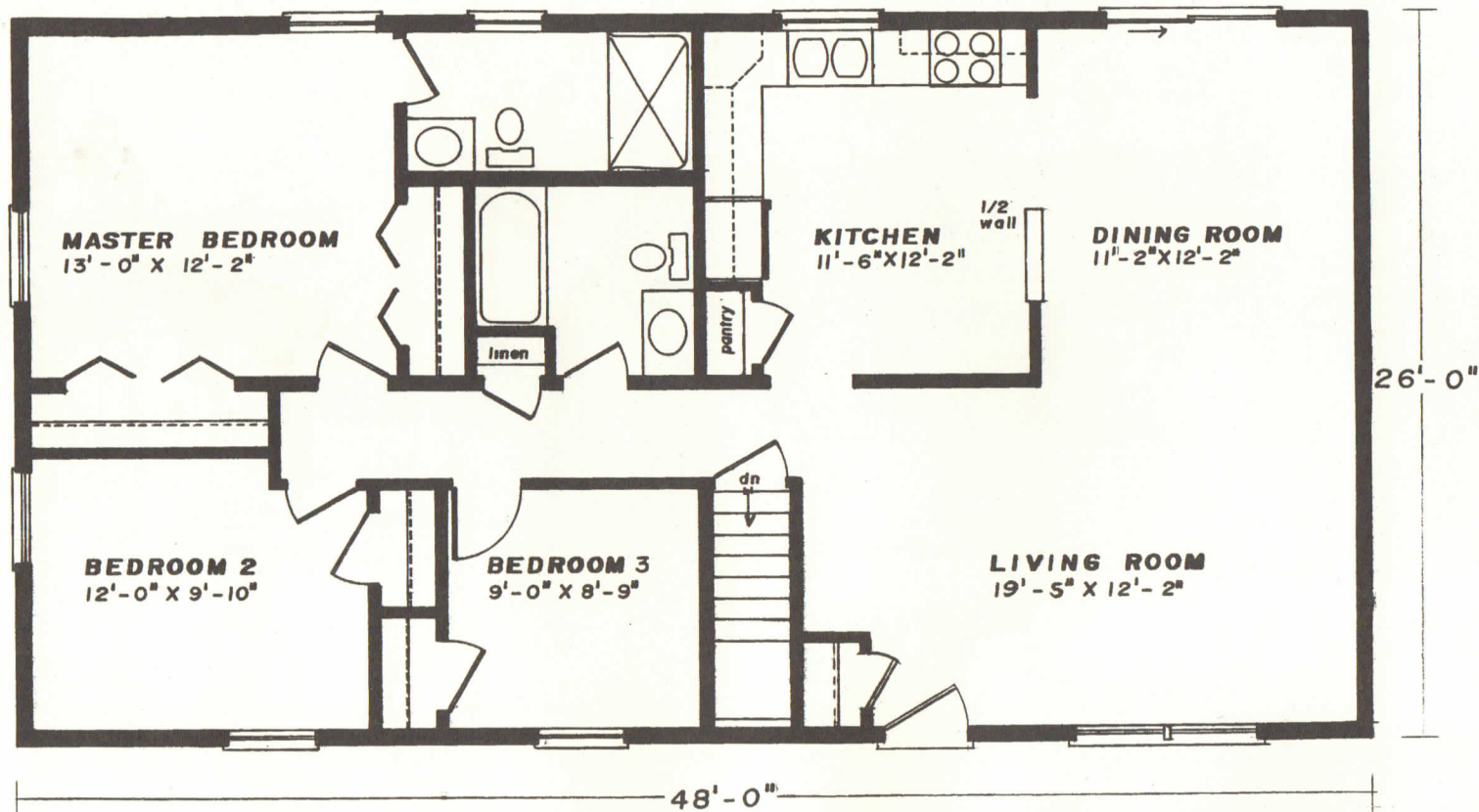
(518) 537-6888

The Birchwood



26' x 48' • 1248 Sq. Ft.

WESTCHESTER MODULAR HOMES



Standard Birchwood Features

- 3 Spacious Bedrooms
- 2 Baths
- Spacious Eat-in Kitchen
- Fireplace Options Available
- Consult an Authorized Westchester Builder for a Complete List of Options
- Artist's renderings and Floor Plan Dimensions are approximate. All specifications must be Written in the Contract. No oral conditions.



We Build Green!

Featuring High-Quality Andersen® Products

Andersen® WINDOWS • DOORS AW

COLUMBIA
HOME SOLUTIONS

Hudson Valley Home Builder Since 1986

www.Columbia-Home-Solutions.com

(518) 537-6888