

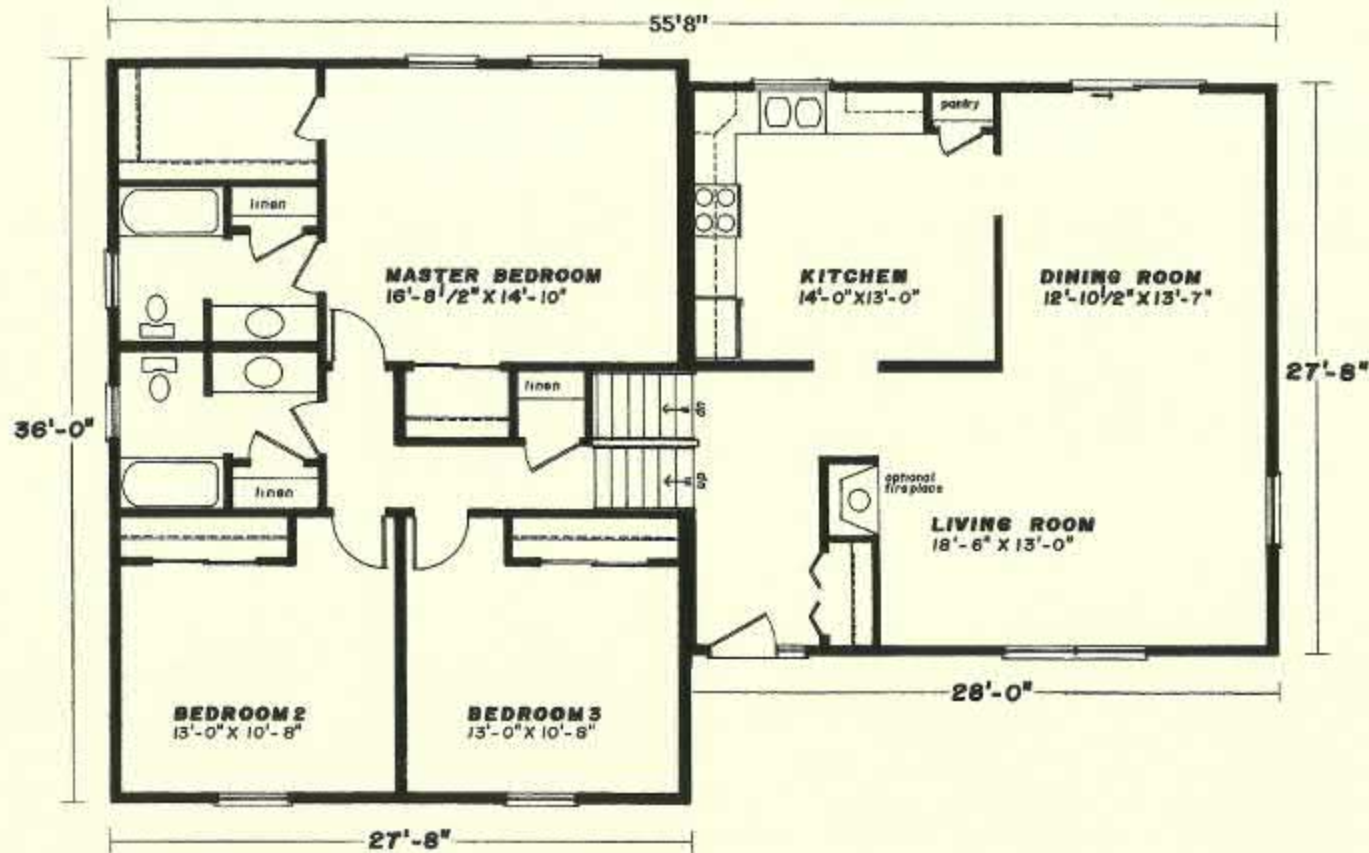


*The  
Dover*





First Floor 27'8" x 28' • 1792 Sq. Ft.  
Upper Level - 27'8" x 36'



## Standard Dover Features

- 3 Spacious Bedrooms
- 2 Baths
- Formal Entry Foyer
- Formal Dining Room
- Formal Living Room
- Spacious Eat-In Kitchen
- Fireplace Options Available
- "Boxed-out" and "Angle-Bay" Options Available
- Consult an Authorized Westchester Builder for a Complete List of Options
- Photos and Floor Plan Dimensions are approximate. All specifications must be Written in the Contract. No oral conditions.



We Build Green!

Featuring High-Quality Andersen® Products



[www.Columbia-Home-Solutions.com](http://www.Columbia-Home-Solutions.com)



1094 County Rt 6, Germantown, NY 12526 (518) 537-6888