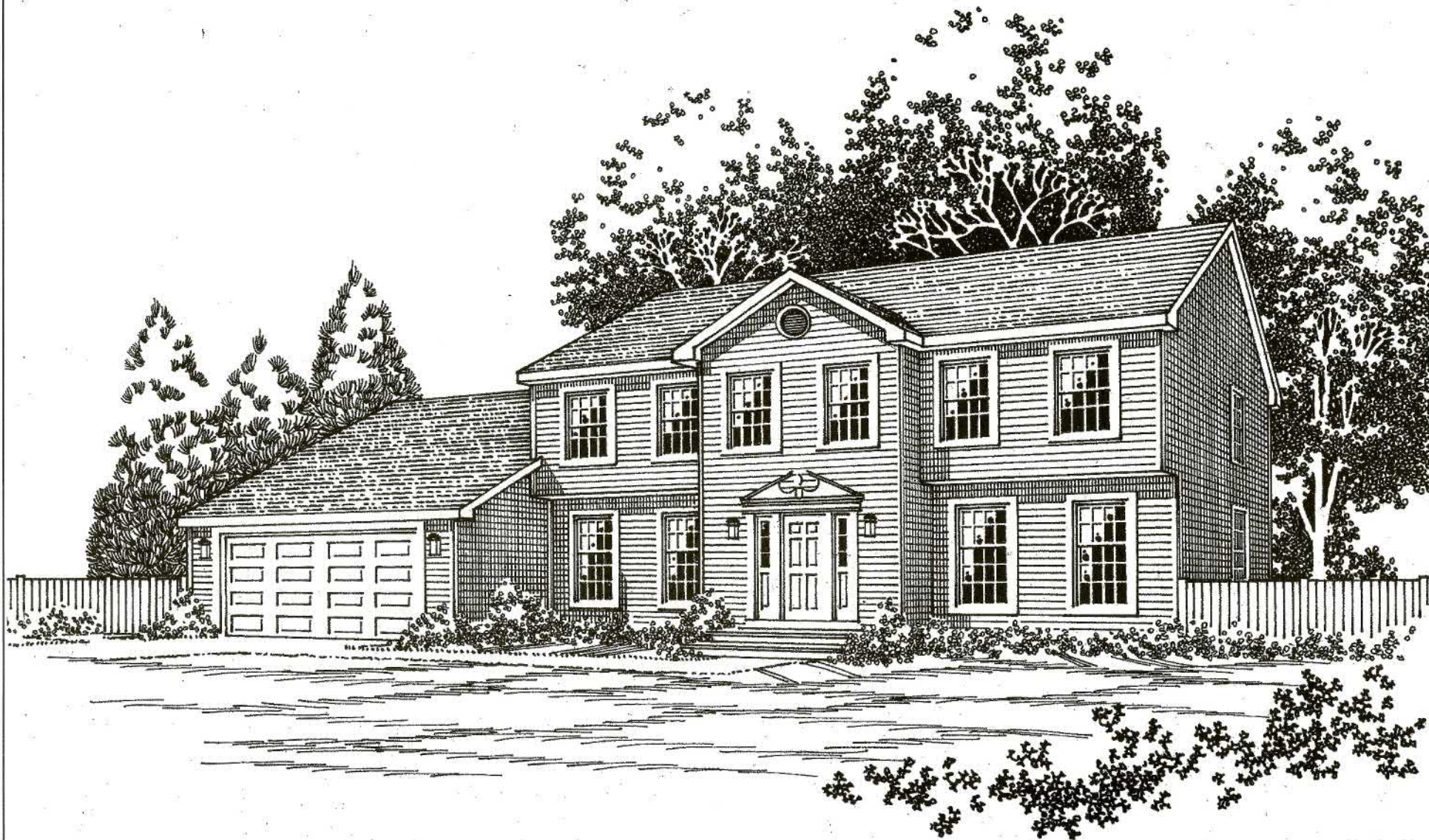
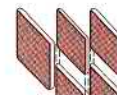


WESTCHESTER MODULAR HOMES



Shown with optional two-car garage package.

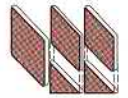
*The*  
**Hampton**



  
**Columbia**  
**HOME SOLUTIONS**  
*Hudson Valley Home Builder Since 1985*

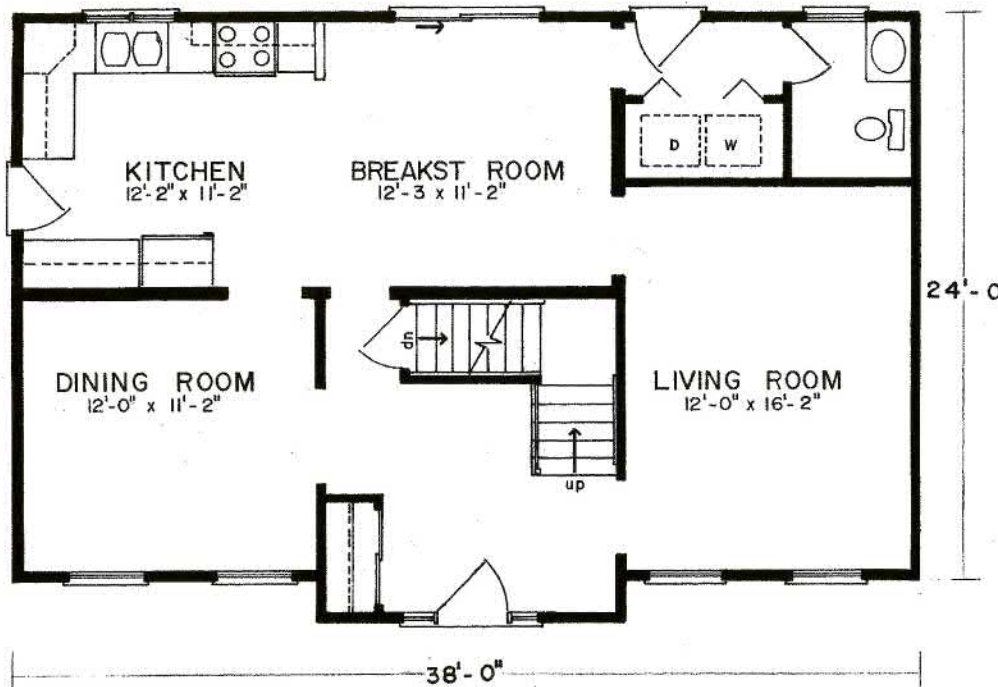
[www.Columbia-Home-Solutions.com](http://www.Columbia-Home-Solutions.com)

*Two Story Colonial  
Home Plans*

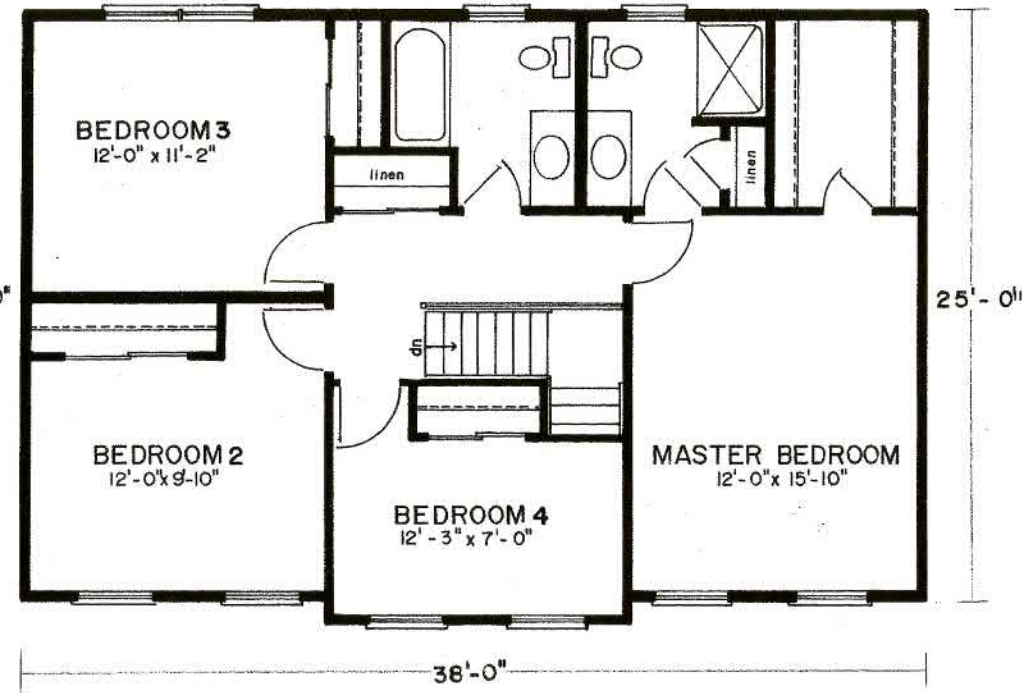


First Floor 24' x 38' • 1862 Sq. Ft.  
 Second Floor - 25' x 38'  
 Boxed out Front • 114 Sq. Ft.

First Floor



Second Floor



Columbia Home Solutions - Hudson Valley Home Builder since 1985 - [www.Columbia-Home-Solutions.com](http://www.Columbia-Home-Solutions.com)

## Standard Hampton Features

- 4 Spacious Bedrooms
- 2 1/2 Baths
- Formal Entry Foyer
- Formal Dining Room
- Formal Living Room
- Country Kitchen with Breakfast Room
- "Acorn" Pediment on Front Door
- Front elevation Features Cantilevered Second Floor, Boxed-out Front with Reverse Gable and Picture Framed Windows with 3056 Windows on Lower Level
- Fireplace Options Available
- "Boxed-out" and "Angle Bay" Options Available
- Consult an Authorized Westchester Builder for a Complete List of Options
- Artist's renderings and Floor Plan Dimensions are approximate. All specifications must be Written in the Contract. No oral conditions.



We Build Green!

Featuring High-Quality Andersen® Products



Hudson Valley Home Builder Since 1985  
[www.Columbia-Home-Solutions.com](http://www.Columbia-Home-Solutions.com)



1094 County Rt 6  
 Germantown, NY 12526  
 518-537-6888