



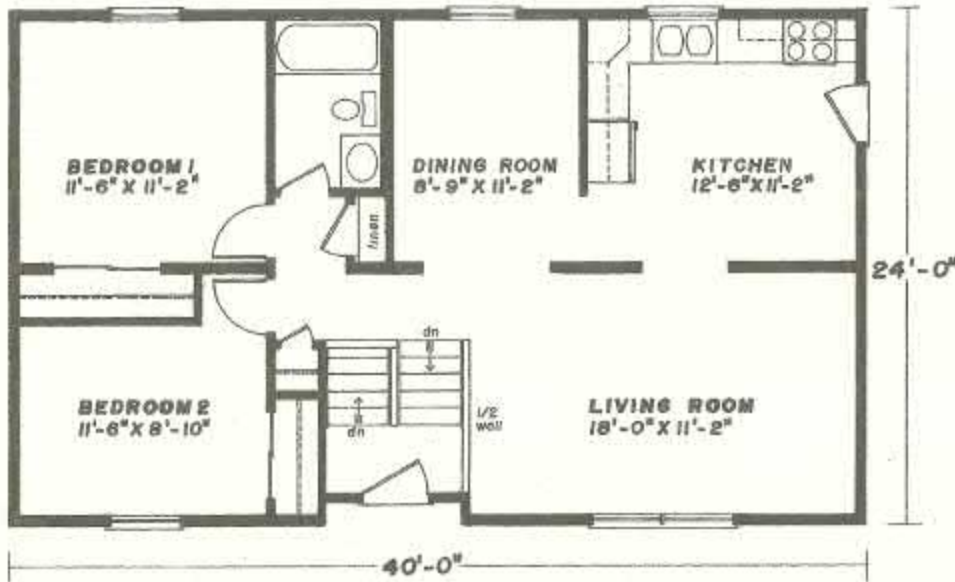
*Shown with optional reverse gable, double front door
sidelites, and octagon window.*

*The
Troy*

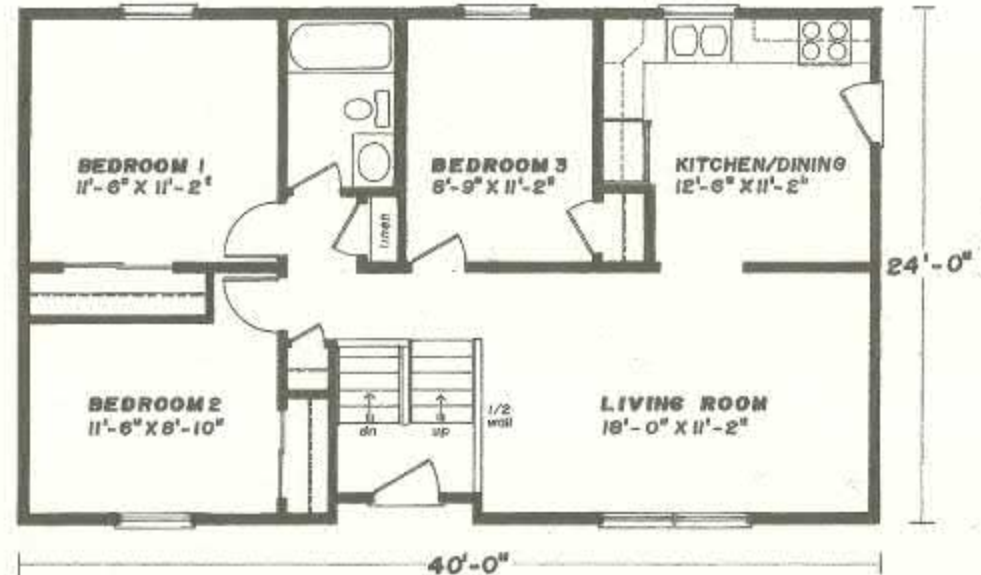




24' x 40' • 960 Sq. Ft.



Optional 3-Bedroom Layout



Columbia Home Solutions - Hudson Valley Home Builder since 1985 - www.Columbia-Home-Solutions.com

Standard Troy Features

- 2 or 3 Bedrooms
- Country-Style Eat-in Kitchen
- Recessed Entry
- Fireplace Options Available
- Consult an Authorized Westchester Builder for a Complete List of Options
- Artist's renderings and Floor Plan Dimensions are approximate. All specifications must be Written in the Contract. No oral conditions.



We Build Green!

Featuring High-Quality Andersen® Products



Hudson Valley Home Builder since 1985
www.Columbia-Home-Solutions.com

INDEPENDENT AUTHORIZED BUILDER
WESTCHESTER MODULAR HOMES, INC.
 AN EMPLOYEE OWNED COMPANY