



Shown with optional reverse gable, picture window and front door sidelite.



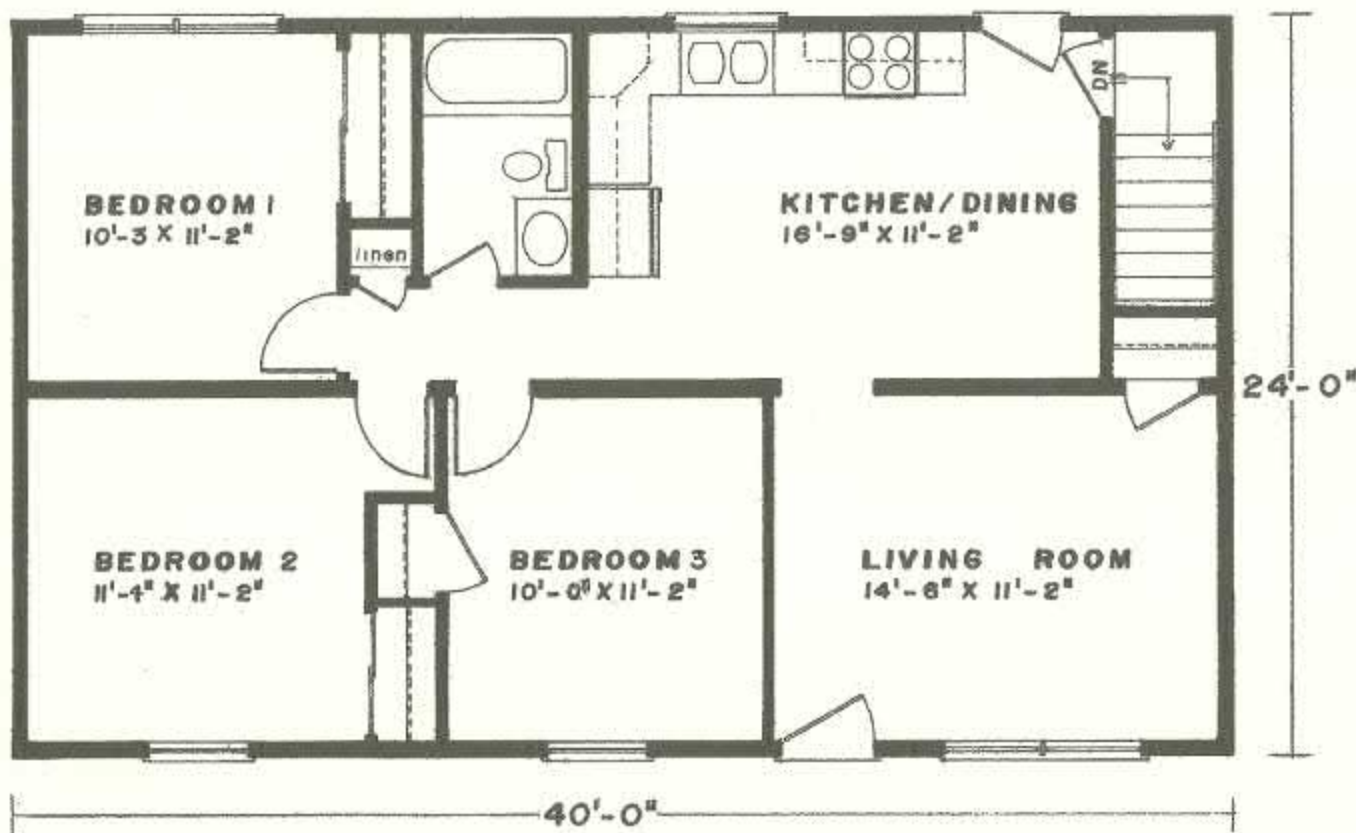
Standard Westford elevation.

The
Westford





24' x 40' • 960 Sq. Ft.



Columbia Home Solutions - Hudson Valley Home Builder since 1985 - www.Columbia-Home-Solutions.com

Standard Westford Features

- 3 Spacious Bedrooms
- Country-Style Eat-in Kitchen
- Fireplace Options Available
- Consult an Authorized Westchester Builder for a Complete List of Options
- Artist's renderings and Floor Plan Dimensions are approximate. All specifications must be Written in the Contract. No oral conditions.



We Build Green!

Featuring High-Quality Andersen® Products



Columbia HOME SOLUTIONS

Hudson Valley Home Builder since 1985
www.Columbia-Home-Solutions.com



INDEPENDENT AUTHORIZED BUILDER
WESTCHESTER MODULAR HOMES, INC.
AN EMPLOYEE OWNED COMPANY