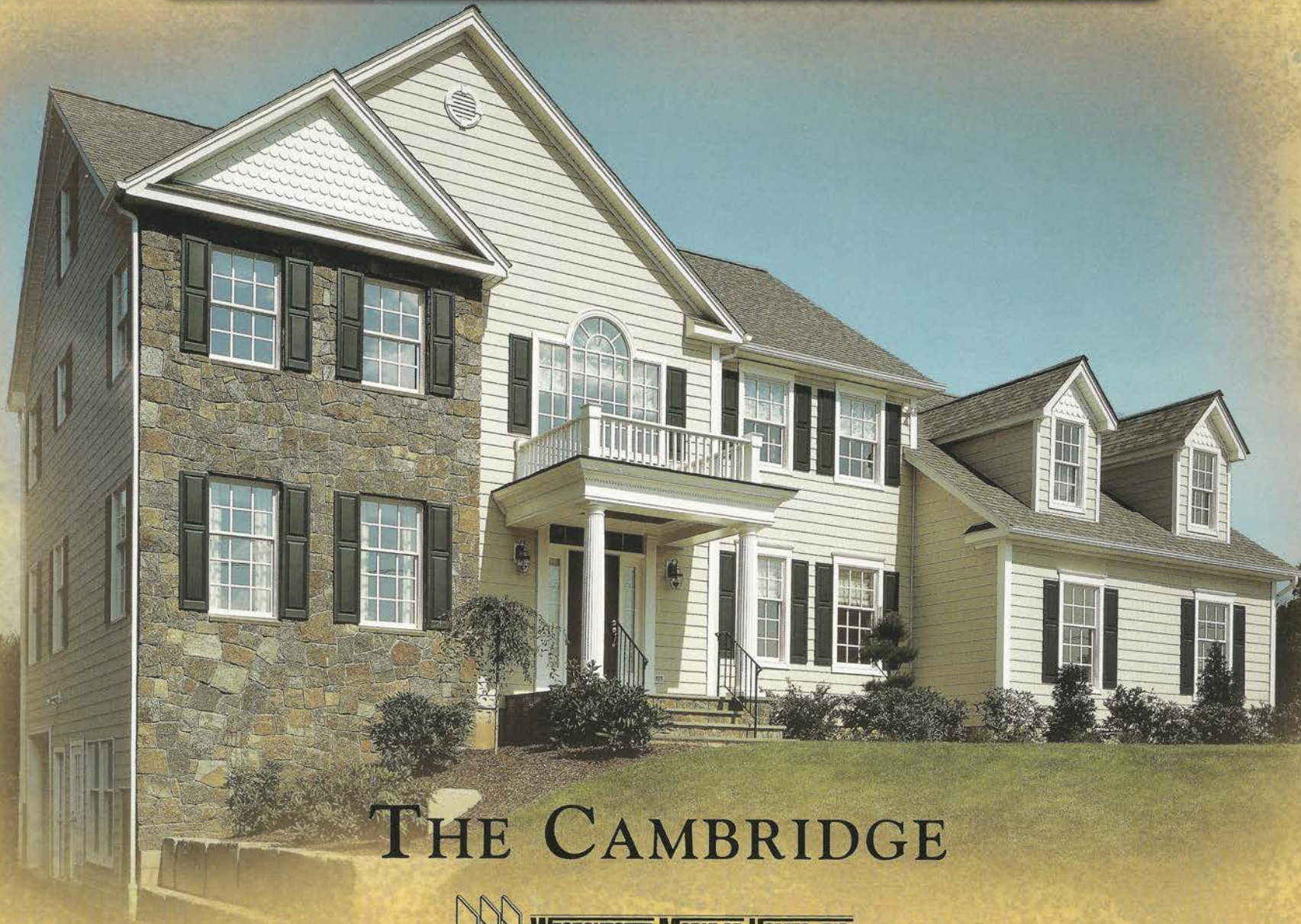


WESTCHESTER
COMMEMORATIVE
SERIES



THE CAMBRIDGE



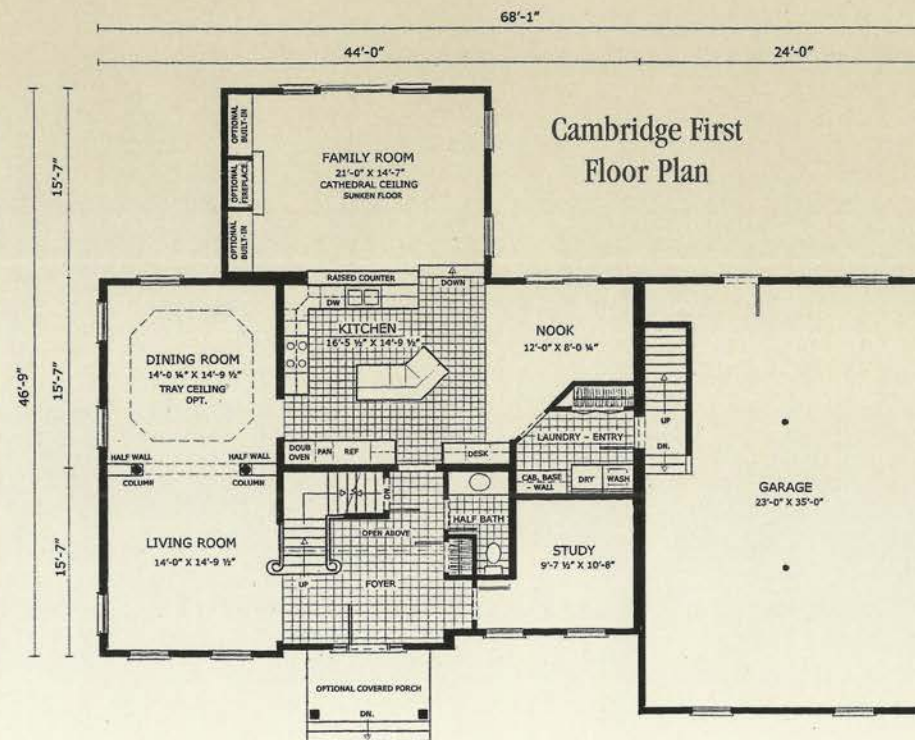
WESTCHESTER MODULAR HOMES, INC.

AN EMPLOYEE OWNED COMPANY

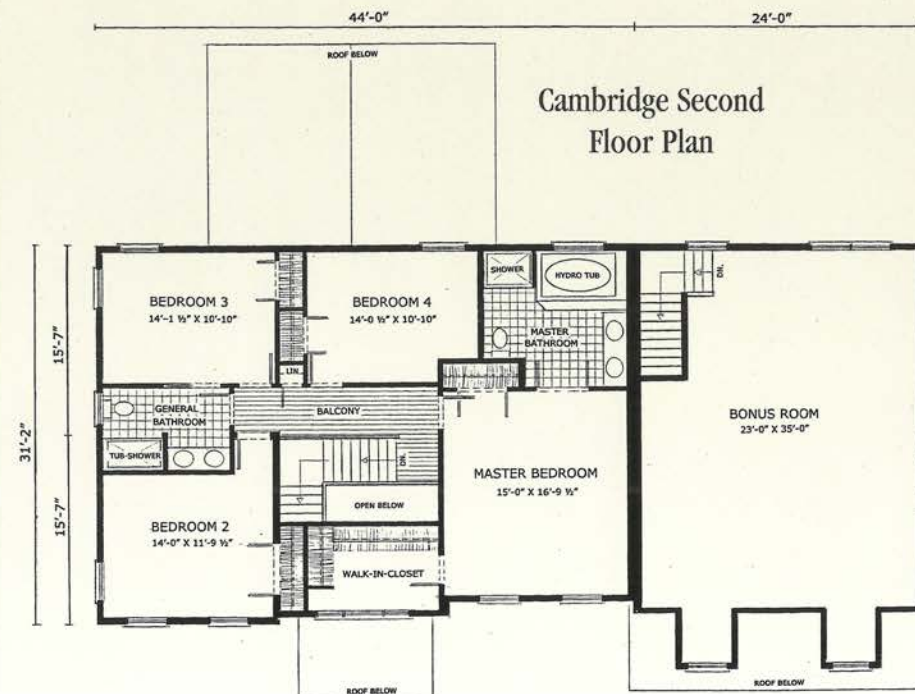
COMMEMORATIVE SERIES

Luxury and Superior Quality are the most defining features of Westchester Modular Homes' Commemorative Series.

The Commemorative Series comes equipped with the upgraded options shown at right at no additional charge. With this Series, the most discriminating home buyer will enjoy a home of lasting value.



◆ FIRST FLOOR - 9'-0" CEILING



◆ SECOND FLOOR - 8'0" CEILING

Please note - garage and bonus room are optional.

UPGRADED CAMBRIDGE FEATURES

- 9/12 roof and low profile "shingle over" ridge vent
- Andersen® arch window in Family Room
- Merillat® "Seneca Ridge Oak" Kitchen Cabinets featuring:
 - 42" wall cabinets
 - Soffit
 - Double oven and pantry cabinet
 - Working island bar with breakfast counter
 - Desk area
- Semi-solid six panel masonite interior doors
- True cathedral ceiling in sunken Family Room
- 3 1/2" colonial casing and 5 1/4" baseboard moulding
- Thermatru Fiber-Classic 6 panel front entry door with sidelights and transom
- 9' first floor ceiling height
- Oak tread stairs with double volute and oak gooseneck rails
- Master Bath Featuring:
 - Jacuzzi® brand whirlpool bath
 - Separate 48" shower stall
 - Double bowl vanity

Double reverse gable site supplied and installed.

Please consult your independent authorized builder for a complete list of standard upgrades in this model. Standard features and specifications are subject to change without notice.



www.Columbia-Home-Solutions.com

Featuring High-Quality Andersen® Products

