

WESTCHESTER MODULAR HOMES



Shown with optional front door sidelites and pediment.

The
Lexington


Columbia
HOME SOLUTIONS
Hudson Valley Home Builder Since 1985

www.Columbia-Home-Solutions.com

*Two Story Colonial
Home Plans*

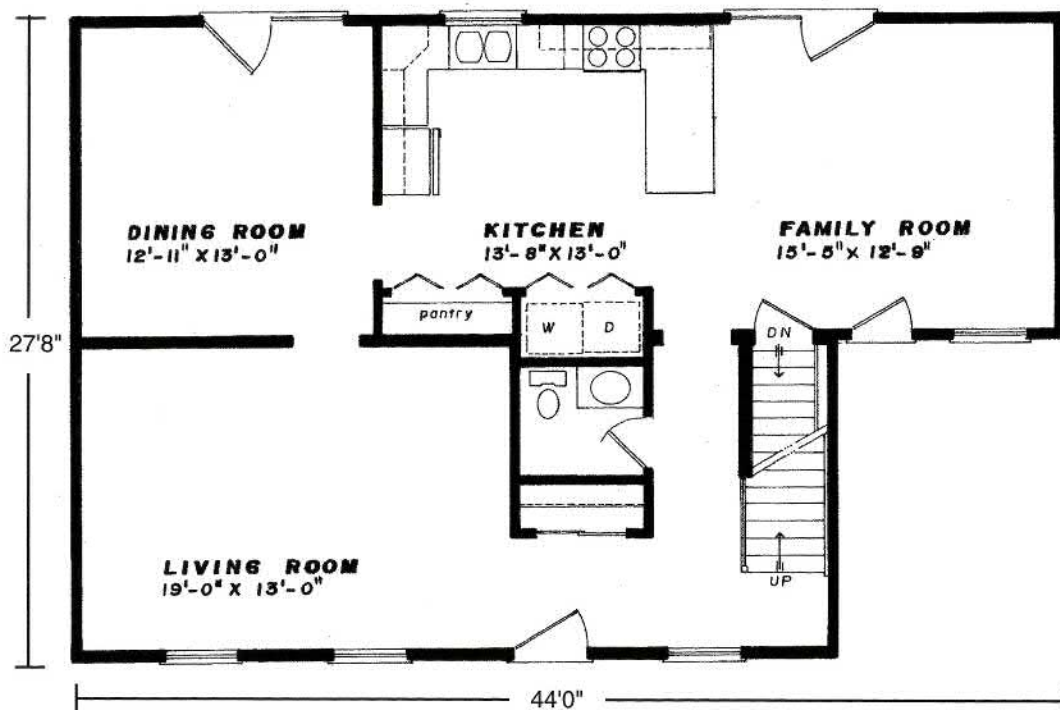




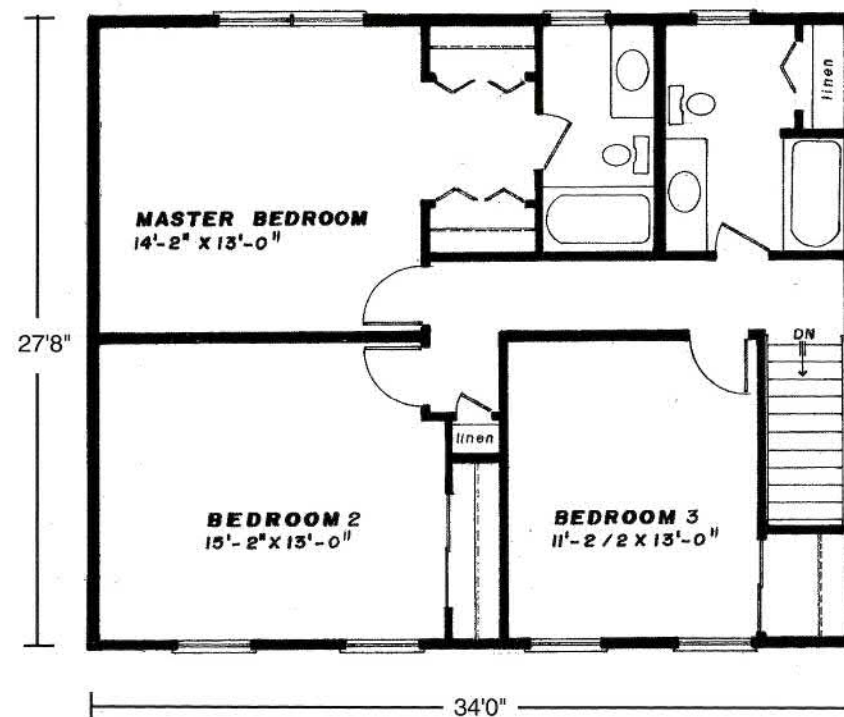
First Floor 27'8" x 34'44" • 2044 Sq. Ft.

Second Floor 27'8" x 34'

First Floor



Second Floor



Columbia Home Solutions - Hudson Valley Home Builder since 1985 - www.Columbia-Home-Solutions.com

Standard Lexington Features

- 3 Spacious Bedrooms
- 2 1/2 Baths
- Entry Foyer
- Formal Dining Room
- Formal Living Room
- Spacious Bar-Style Kitchen with Washer/Dryer Closet and Pantry
- "Acorn" Pediment on Front Door
- Fireplace Options Available
- "Boxed-out" and "Angle-Bay" Options Available
- Consult an Authorized Westchester Builder for a Complete List of Options
- Artist's renderings and Floor Plan Dimensions are approximate. All specifications must be Written in the Contract. No oral conditions.



We Build Green!

Featuring High-Quality Andersen® Products



Columbia HOME SOLUTIONS

Hudson Valley Home Builder Since 1985

www.Columbia-Home-Solutions.com



1094 County Rt 6
Germantown, NY 12526
518-537-6888