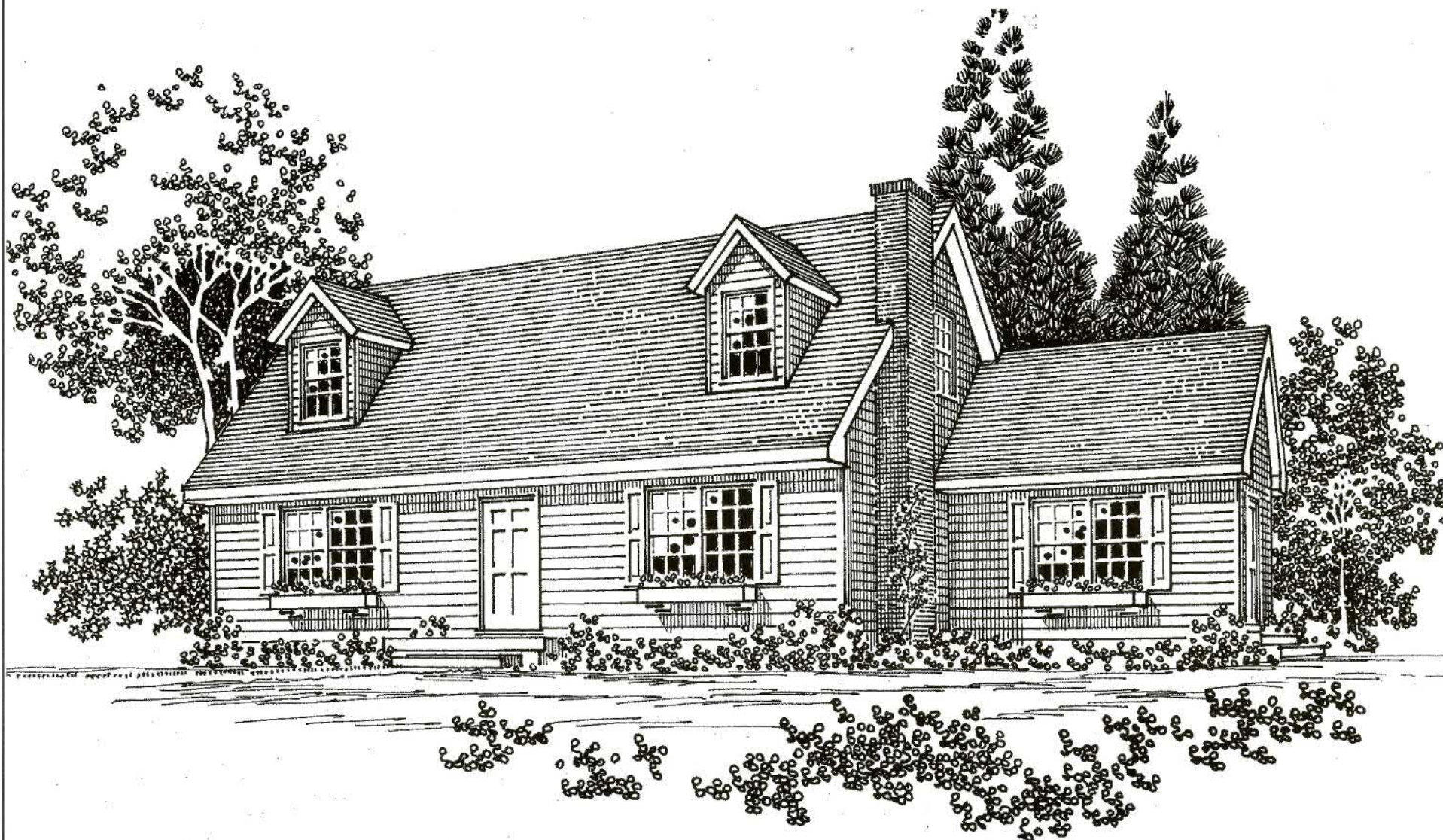
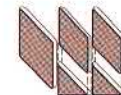


WESTCHESTER MODULAR HOMES



Shown with optional fireplace and dormers.

The
Pocasset




Columbia
HOME SOLUTIONS
Hudson Valley Home Builder Since 1985

www.Columbia-Home-Solutions.com

Cape Style Home

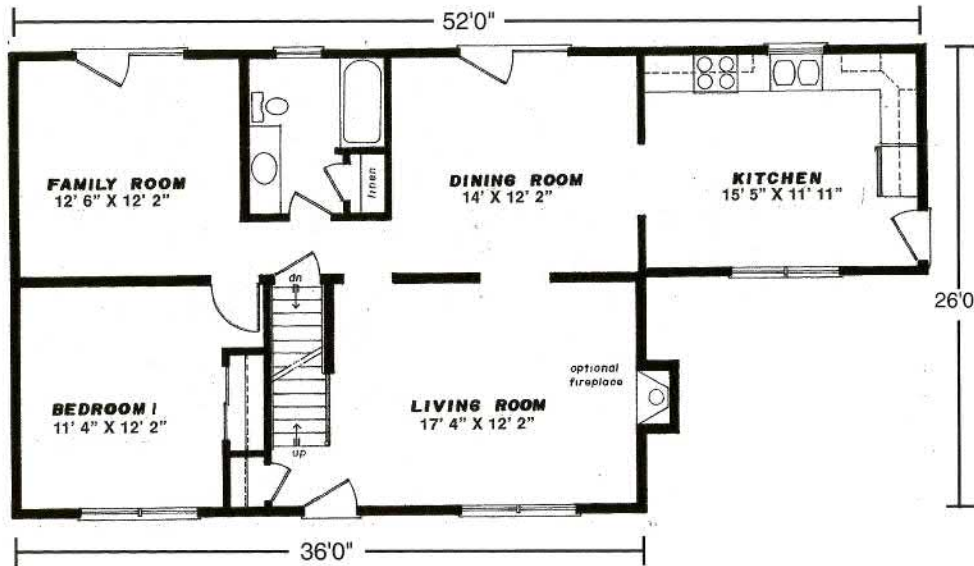
The Pocasset



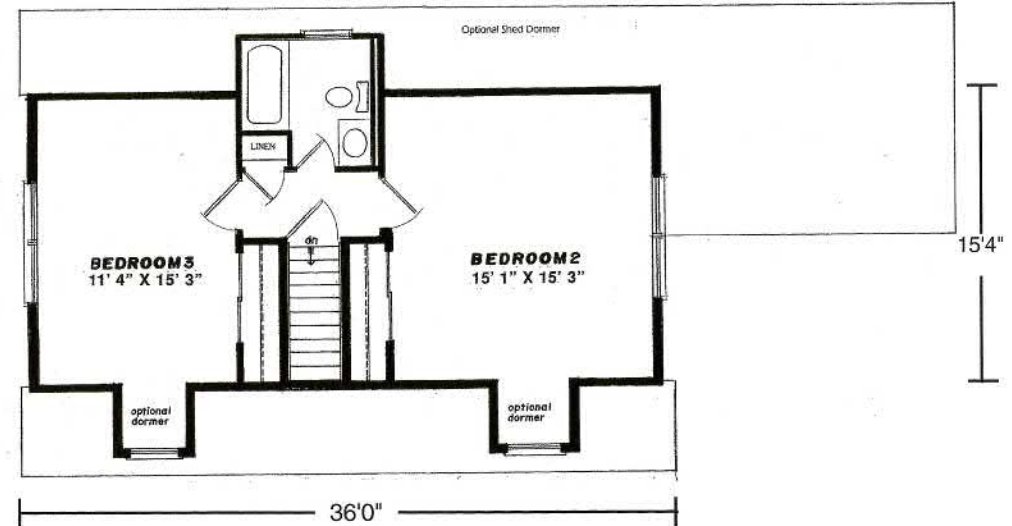
26' x 36'52' • 1144 Sq. Ft.
Unfinished Second Floor 15'4" x 36' • 551 sq. ft.

Westchester Modular Homes

First Floor



Second Floor (Suggested Layout)



Columbia Home Solutions - Hudson Valley Home Builder since 1985 - www.Columbia-Home-Solutions.com

Standard Pocasset Features

- Spacious First Floor Bedroom
- Unfinished Second Floor for Future Expansion
- Formal Dining Room
- Formal Living Room
- Family Room
- Large Eat-In Kitchen
- 4 - 3046 Second Floor Windows
- Fireplace Options Available
- "Boxed-Out" and "Angle-Bay" Options Available
- Consult an Authorized Westchester Builder for a Complete List of Options
- Artist's renderings and Floor Plan Dimensions are approximate. All specifications must be Written in the Contract. No oral conditions.



We Build Green!

Featuring High-Quality
Andersen® Products

WINDOWS • DOORS

Andersen



Hudson Valley Home Builder Since 1985
www.Columbia-Home-Solutions.com



1094 County Rt 6
Germantown, NY 12526
518-537-6888