

WESTCHESTER MODULAR HOMES



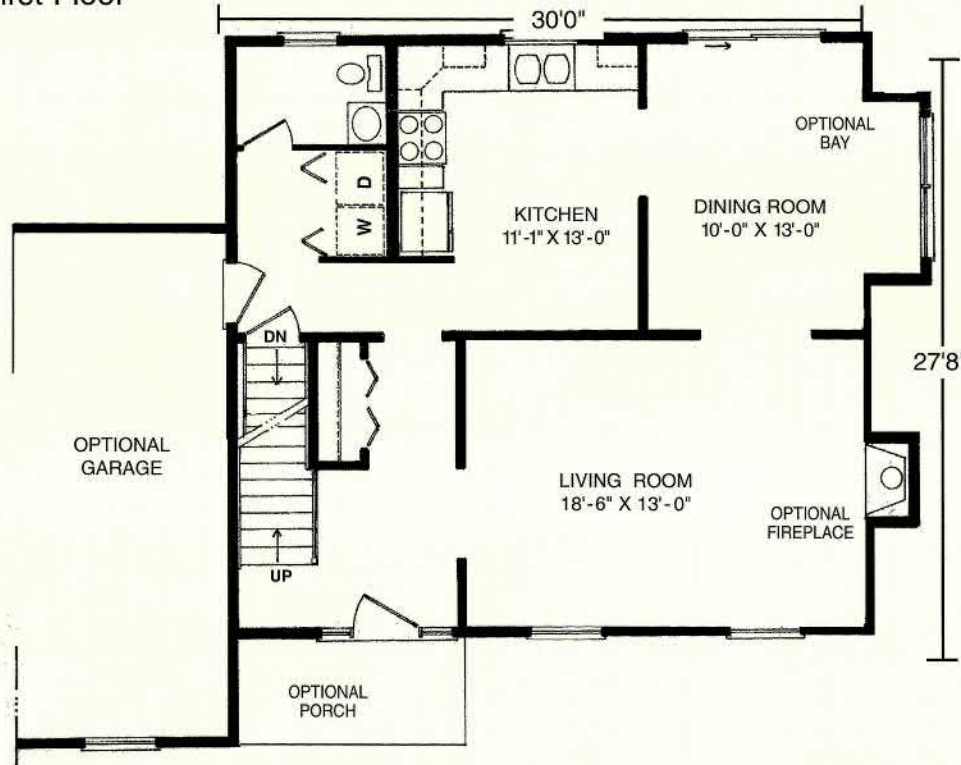
Photo shown with optional features not included in base price.



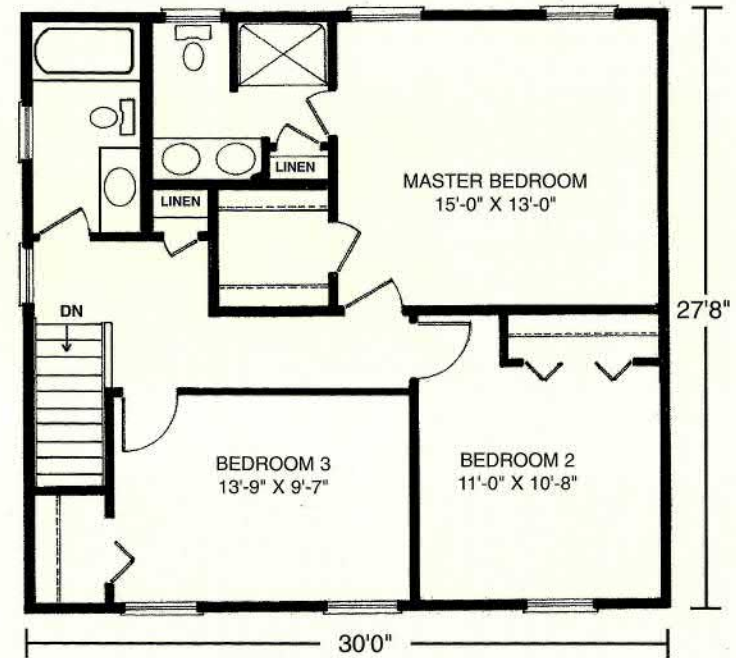


27'8" x 30' • 1680 Sq. Ft.

First Floor



Second Floor



Columbia Home Solutions - Hudson Valley Home Builder since 1985 - www.Columbia-Home-Solutions.com

Standard Choate Features

- 3 Spacious Bedrooms
- 2 Baths
- Master Suite Features; Private Bath with 48" Shower and Vanity with Double Sinks, Plus Walk-in Closet
- Formal Entry Foyer
- Formal Dining Room
- Formal Living Room
- Spacious Eat-in Kitchen
- Convenient Utility Area with Washer/Dryer Hook-up
- Northampton Pediment on Front Door
- Fireplace Options Available
- "Boxed-out" and "Angle-Bay" Options Available
- Consult an Authorized Westchester Builder for a Complete List of Options
- Artist's renderings and Floor Plan Dimensions are approximate. All specifications must be Written in the Contract. No oral conditions.



We Build Green!

Featuring High-Quality Andersen® Products



www.Columbia-Home-Solutions.com



1094 County Rt 6
 Germantown, NY 12526
 518-537-6888