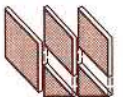
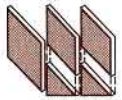


# WESTCHESTER MODULAR HOMES



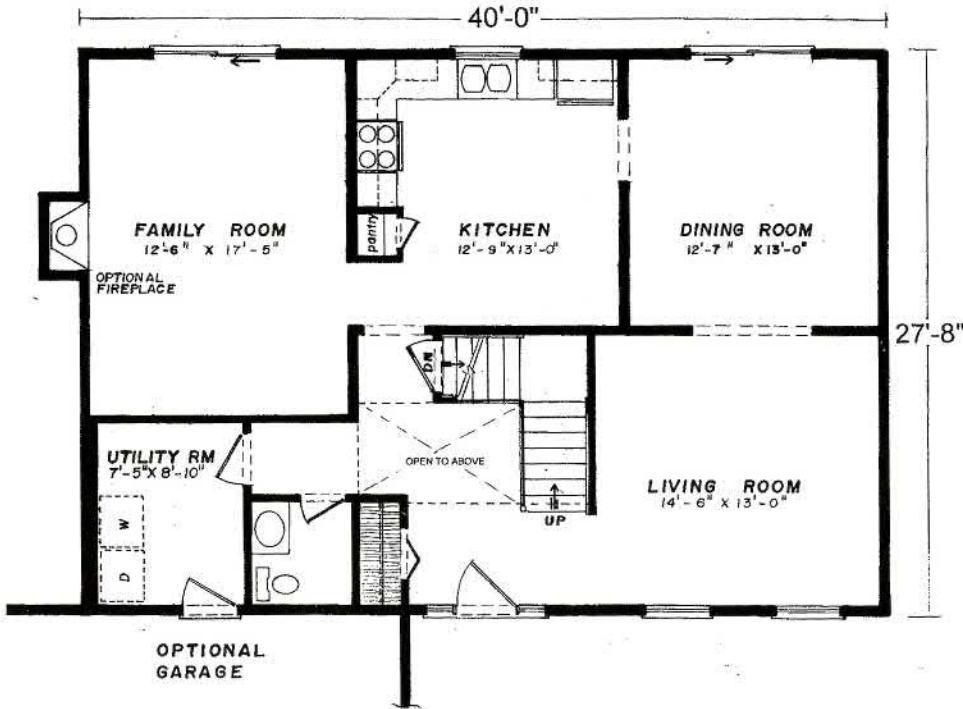
Shown with optional two-car garage and porch package.



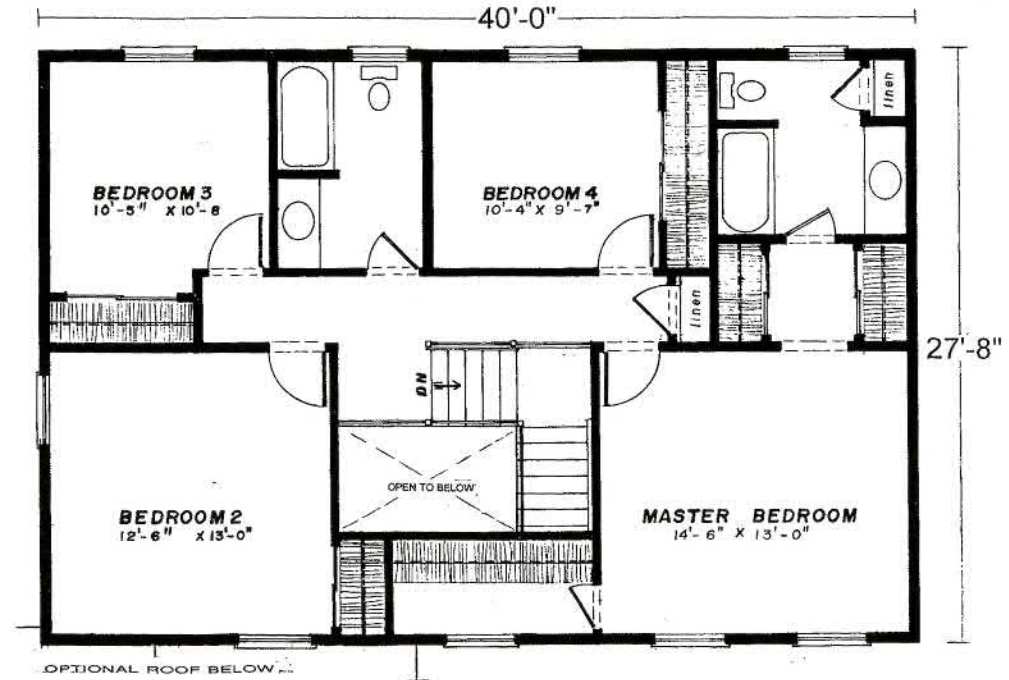


27'8" x 40' • 2240 Sq. Ft.

First Floor



Second Floor



Columbia Home Solutions - Hudson Valley Home Builder since 1985 - [www.Columbia-Home-Solutions.com](http://www.Columbia-Home-Solutions.com)

## Standard Clairmont Features

- 4 Spacious Bedrooms
- 2 1/2 Baths
- Open Two-Story Entry Foyer
- Formal Dining Room
- Formal Living Room
- Spacious Eat-in Kitchen with Pantry
- "Cottage-Style" 3056 Lower Level Window on Front
- Fireplace Options Available
- "Boxed-out" and "Angle Bay" Options Available
- Consult an Authorized Westchester Builder for a Complete List of Options
- Artist's renderings and Floor Plan Dimensions are approximate. All specifications must be written in the contract. No oral conditions.

Featuring High-Quality Andersen® Products

Columbia HOME SOLUTIONS  
Hudson Valley Home Builder Since 1985  
[www.Columbia-Home-Solutions.com](http://www.Columbia-Home-Solutions.com)

INDEPENDENT AUTHORIZED BUILDER  
WESTCHESTER MODULAR HOMES, INC.  
AN EMPLOYEE OWNED COMPANY

1094 County Rt 6  
Germantown, NY 12526  
518-537-6888