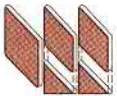


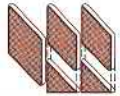
WESTCHESTER MODULAR HOMES



Shown with optional two-car garage, "Angle Bay", and fireplace.

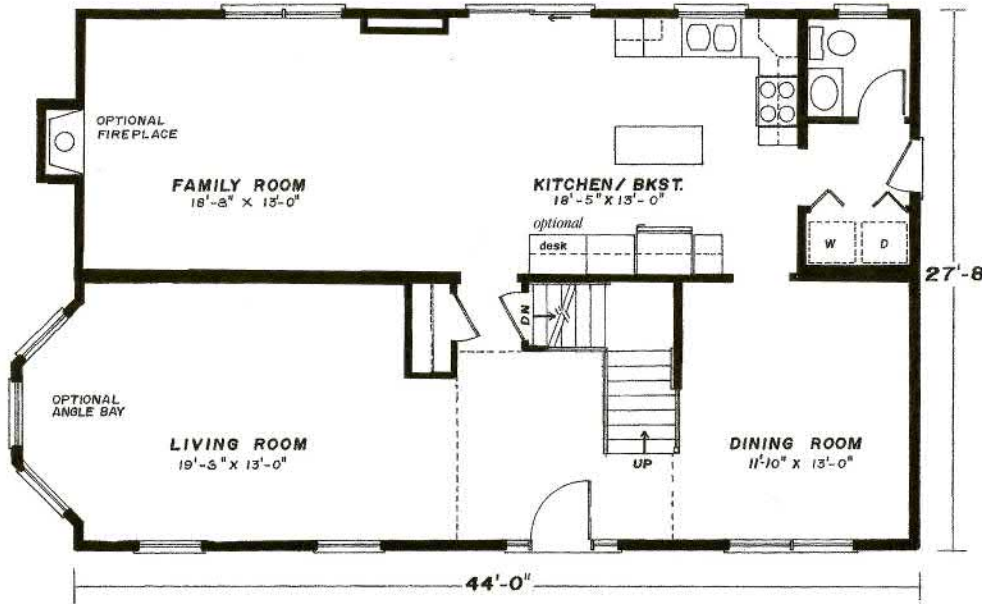
*The*  
**Cornwall**



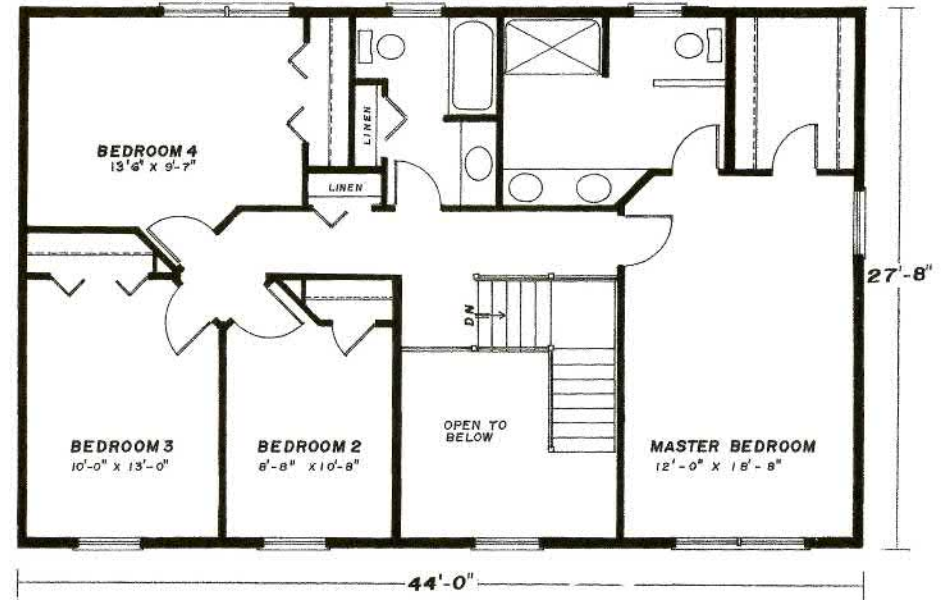


27'8" x 44' • 2464 Sq. Ft.

First Floor



Second Floor



Columbia Home Solutions - Hudson Valley Home Builder since 1985 - [www.Columbia-Home-Solutions.com](http://www.Columbia-Home-Solutions.com)

## Standard Cornwall Features

- 4 Spacious Bedrooms
- 2 1/2 Baths
- Open Two-Story Entry Foyer
- Formal Dining Room
- Formal Living Room
- Country Kitchen Features Island with 36" Desk
- "Acorn" Pediment on Front Door
- "Cottage-Style" 3056 Lower Level Windows with Architraves on Front
- Fireplace Options Available
- "Boxed-Out" and "Angle-Bay" Options Available
- Consult an Authorized Westchester Builder for a Complete List of Options
- Artist's renderings and Floor Plan Dimensions are approximate. All specifications must be Written in the Contract. No oral conditions.



Featuring High-Quality Andersen® Products

**Columbia HOME SOLUTIONS**  
Hudson Valley Home Builder Since 1985  
[www.Columbia-Home-Solutions.com](http://www.Columbia-Home-Solutions.com)

1094 County Rt 6  
Germantown, NY 12526  
518-537-68888

INDEPENDENT AUTHORIZED BUILDER  
WESTCHESTER MODULAR HOMES, INC.  
AN EMPLOYEE OWNED COMPANY