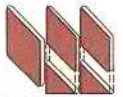


WESTCHESTER MODULAR HOMES



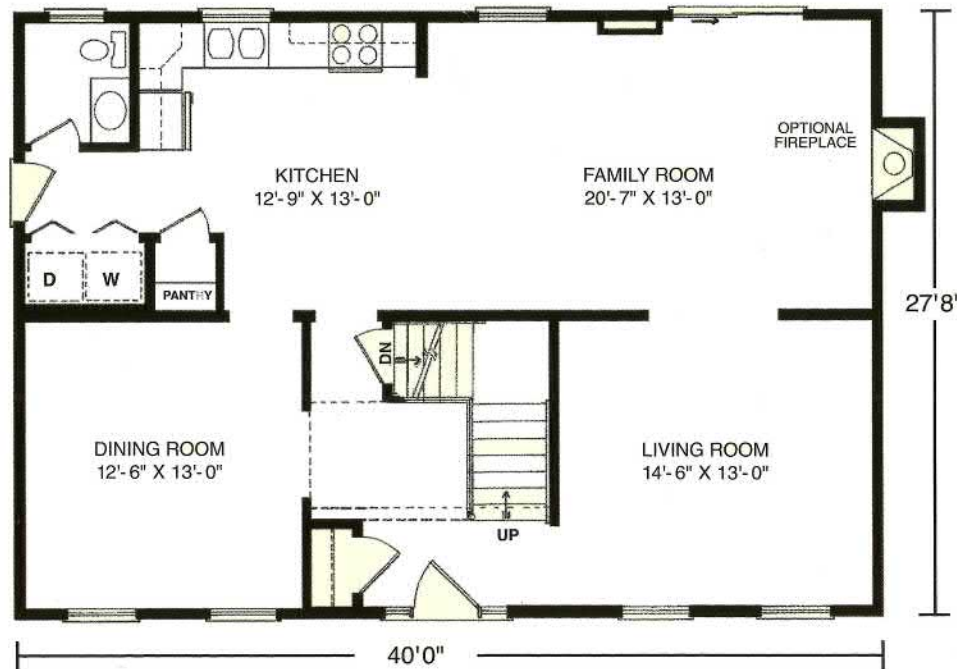
Shown with optional garage.



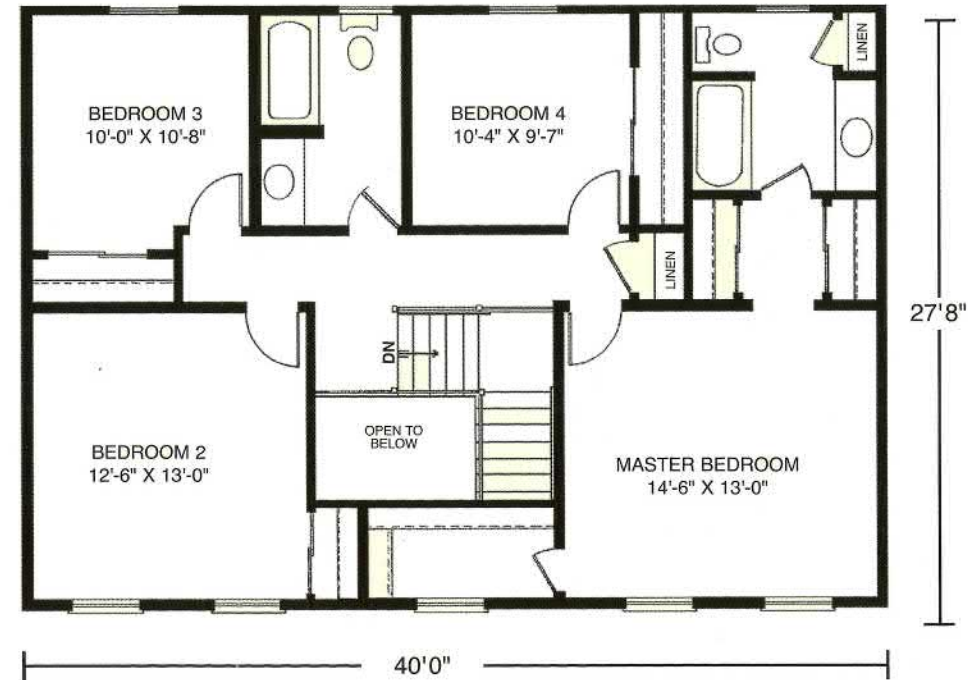


27'8" x 40' • 2240 Sq. Ft.

First Floor



Second Floor



Columbia Home Solutions - Hudson Valley Home Builder since 1985 - www.Columbia-Home-Solutions.com

Standard Cortland Features

- 4 Spacious Bedrooms
- 2 1/2 Baths
- Open Two-Story Entry Foyer
- Formal Dining Room
- Formal Living Room
- Spacious Country Kitchen with Pantry
- "Acorn" Pediment on Front Door
- "Cottage-Style" 3056 Lower Level Windows with Architraves on Front
- Fireplace Options Available
- "Boxed-Out" and "Angle-Bay" Options Available
- Consult an Authorized Westchester Builder for a Complete List of Options
- Photos and Floor Plan Dimensions are approximate. All specifications must be Written in the Contract. No oral conditions.



1094 County Rt 6
 Germantown, NY 12526
 518-537-68888