



GRACIOUS STYLE WITH ROOM TO PLEASE

The Georgian-style Gracin home plan offers a traditional floor plan with amenities and room to please the entire family. You'll delight in the family room with a two-sided fireplace and built-in shelving, separate first floor study and two-story foyer. A large focal wall of cabinetry graces the professionally designed eat-in kitchen. The first

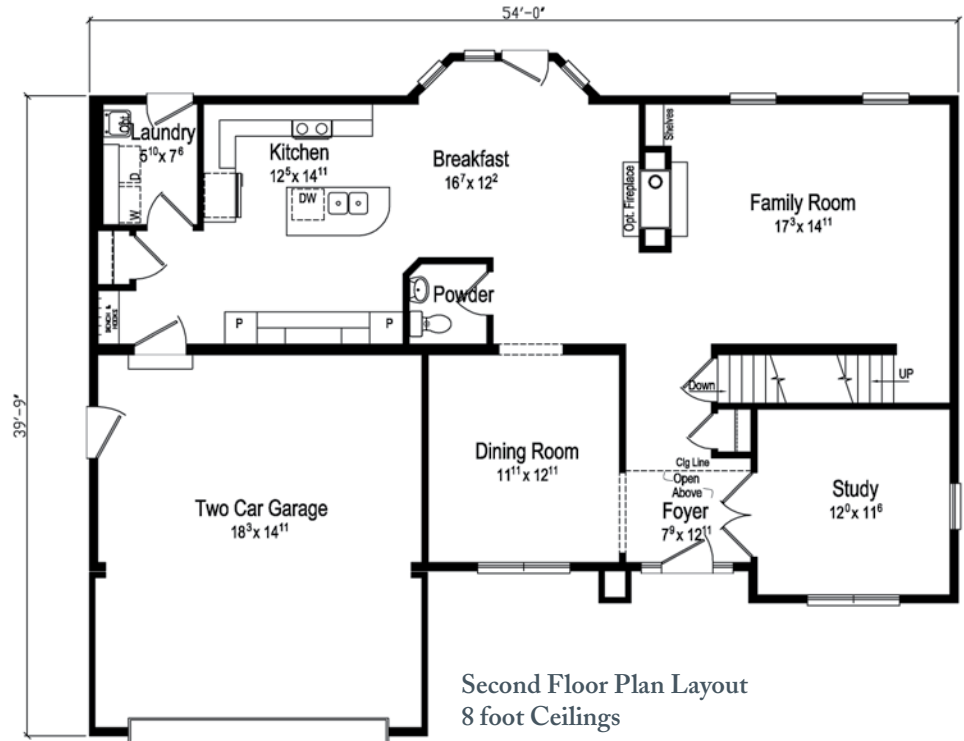
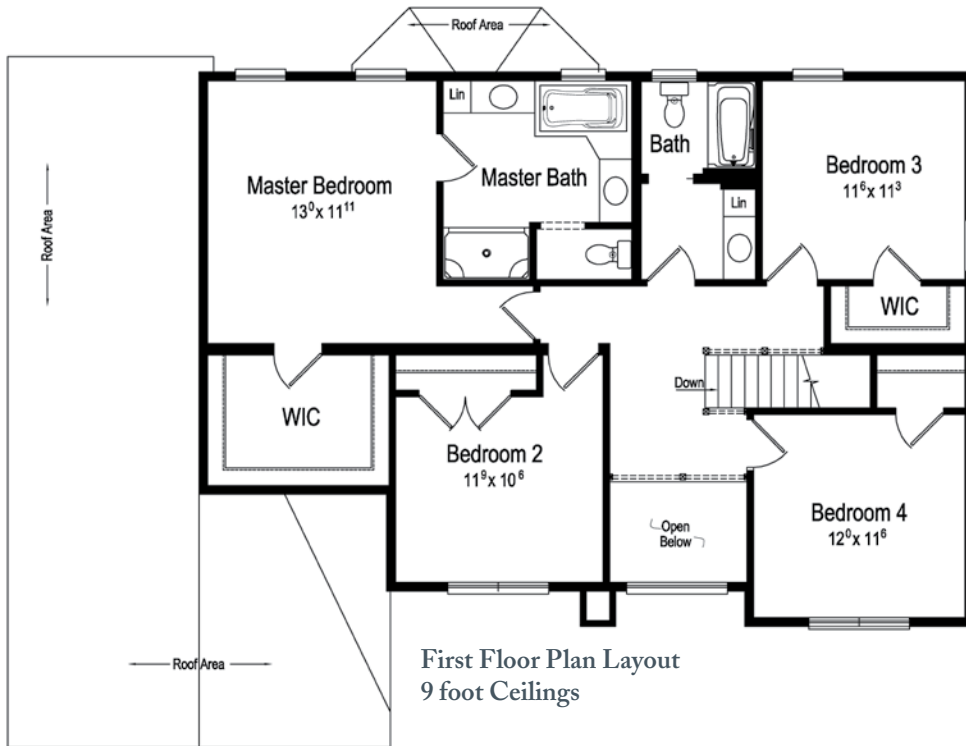
floor laundry conveniently features a mudroom area. With a two-car garage, the Gracin is designed with 4 bedrooms and 2½ baths, including a spacious master with a large walk-in closet and master bath. And, of course, Excel Homes offers hundreds of customization options and upgrades to give you the home of your dreams.

PLAN: **GRACIN**

1st Floor = 1367

2nd Floor = 1267

Total = 2634 S.F.



Excel Homes, LLC.
excelhomes.com

COLUMBIA
HOME SOLUTIONS

Hudson Valley Home Builder Since 1985

www.Columbia-Home-Solutions.com

Builder / Dealer
of

