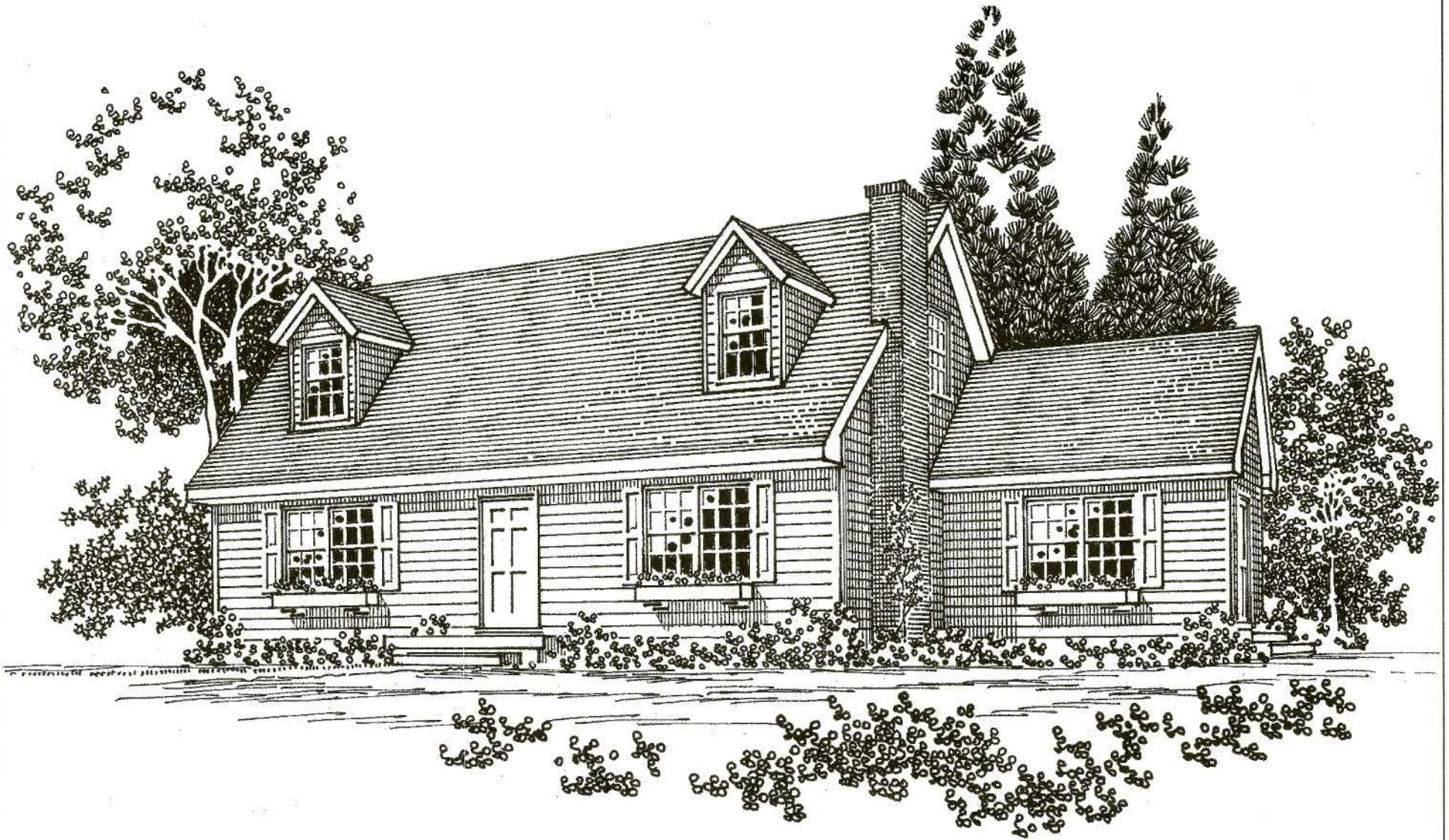
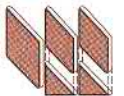


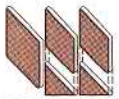
Westchester Modular Homes



Shown with optional dormers and fireplace.



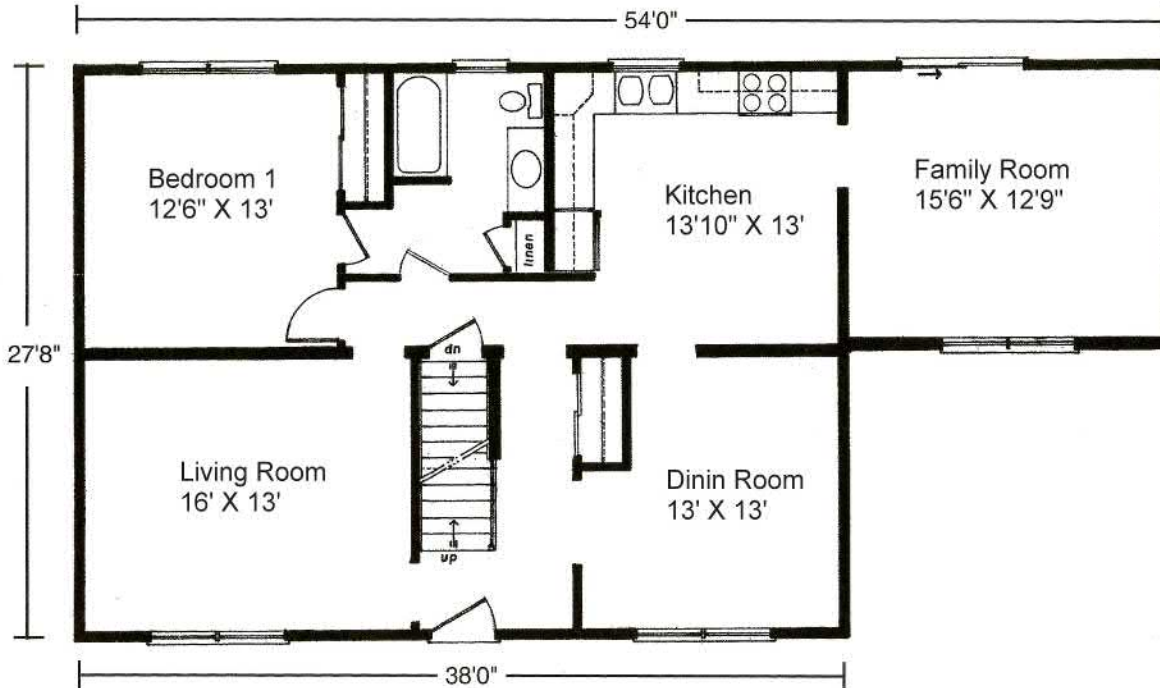
The Hyannis



27'8" x 38'5/4" • 1288 Sq. Ft.
 Unfinished Second Floor - 16' x 38' • 608 Sq. Ft.

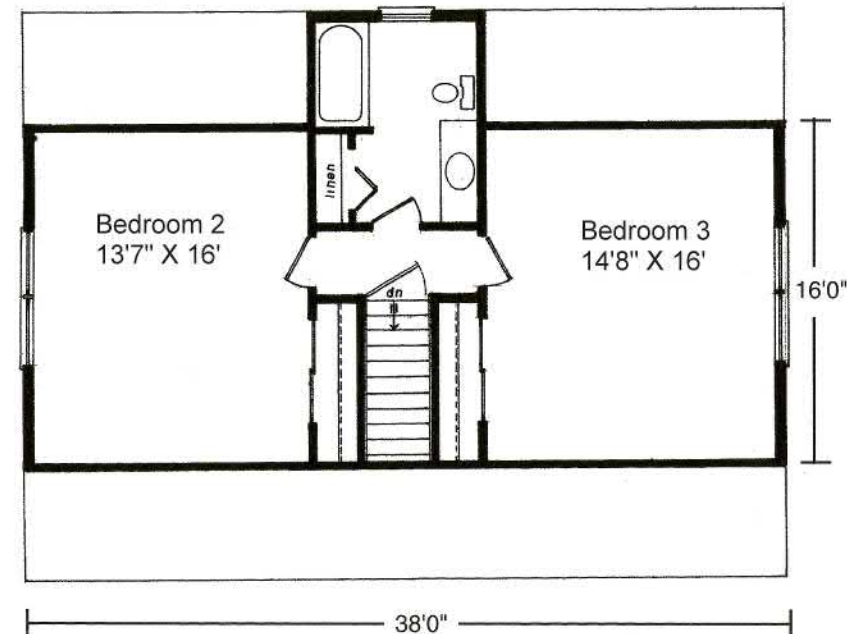
Westchester Modular Homes

First Floor



Second Floor

(Suggested Layout with Optional Shed Dormer)



Standard Hyannis Features

- Spacious First Floor Bedroom
- Unfinished Second Floor for Future Expansion
- Formal Dining Room
- Formal Living Room
- Family Room
- Large Eat-In Kitchen
- 4 - 3046 Second Floor Windows Included
- Fireplace Options Available
- "Boxed-out" and "Angle-Bay" Options Available
- Consult an Authorized Westchester Builder for a Complete List of Options
- Artist's renderings and Floor Plan Dimensions are approximate. All specifications must be Written in the Contract. No oral conditions.

Go to: www.columbia-home-solutions.com



We Build Green!

Featuring High-Quality Andersen® Products



Hudson Valley Home Builder Since 1985

www.Columbia-Home-Solutions.com



1094 County Rt 6
 Germantown, NY 12526
 518-537-68888