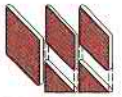




Photo shown with optional features not included in base price.



The Phoenix

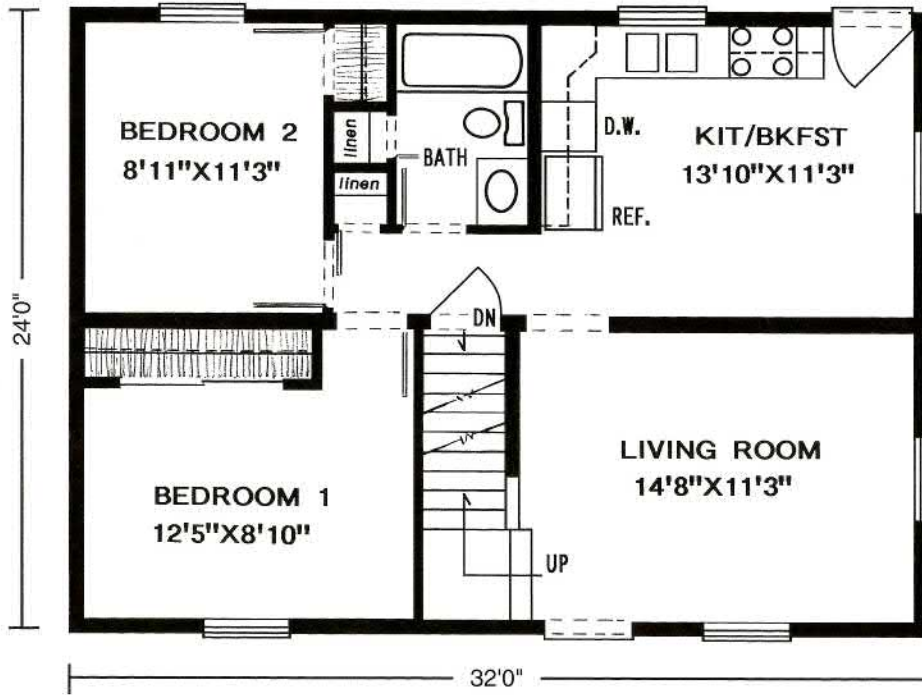


24' x 32' • 768 Sq. Ft.

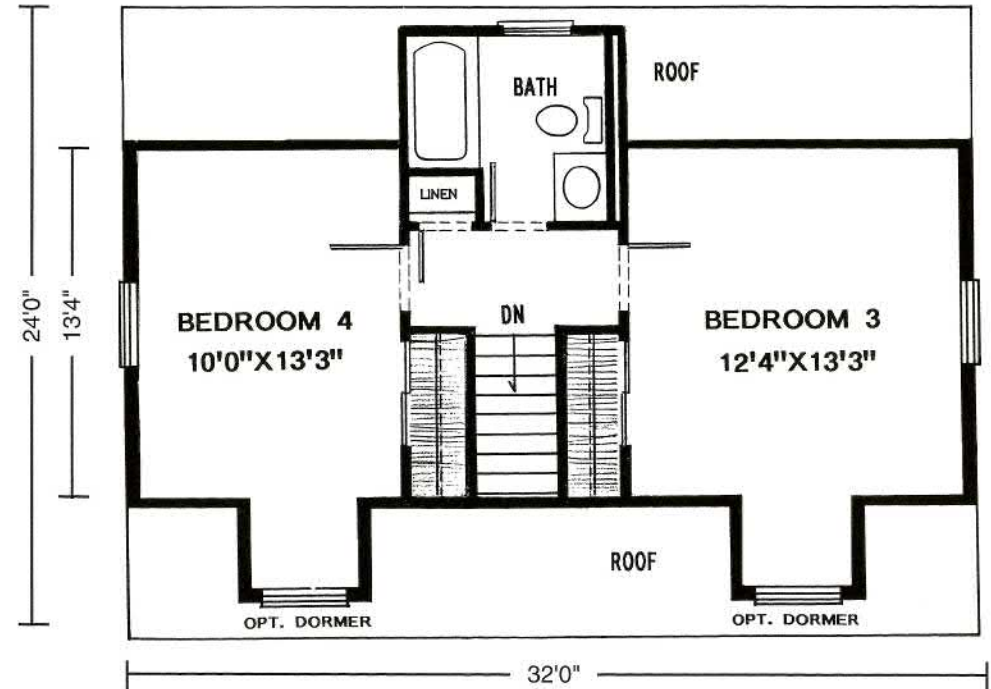
13'4" x 32' Unfinished Second Floor • 426 Sq. Ft.

Westchester Modular Homes

First Floor



Second Floor



Columbia Home Solutions - Hudson Valley Home Builder since 1985 - www.Columbia-Home-Solutions.com

Standard Phoenix Features

- 2 Bedrooms on First Floor
- Spacious Eat-in Kitchen
- 4 - 3046 Second Floor Windows
- Consult an Authorized Westchester Builder for a Complete List of Options
- Artist's renderings and Floor Plan Dimensions are approximate. All specifications must be Written in the Contract. No oral conditions.

Featuring High-Quality Andersen® Products

Andersen WINDOWS • DOORS

Columbia HOME SOLUTIONS
 Hudson Valley Home Builder Since 1985
www.Columbia-Home-Solutions.com

INDEPENDENT AUTHORIZED BUILDER
WESTCHESTER MODULAR HOMES, INC.
AN EMPLOYEE OWNED COMPANY

1094 County Rt 6
 Germantown, NY 12526
 518-537-6888