



CRAFTSMAN STYLE FOR TODAY'S CASUAL FAMILY

Designed with today's casual family in mind, the Richards home plan offers architectural details that are reminiscent of the Craftsman style. With 2½ baths and 3 bedrooms – including a spacious master with a large walk-in closet – the Richards home plan features a two-car garage and a two-story family room with

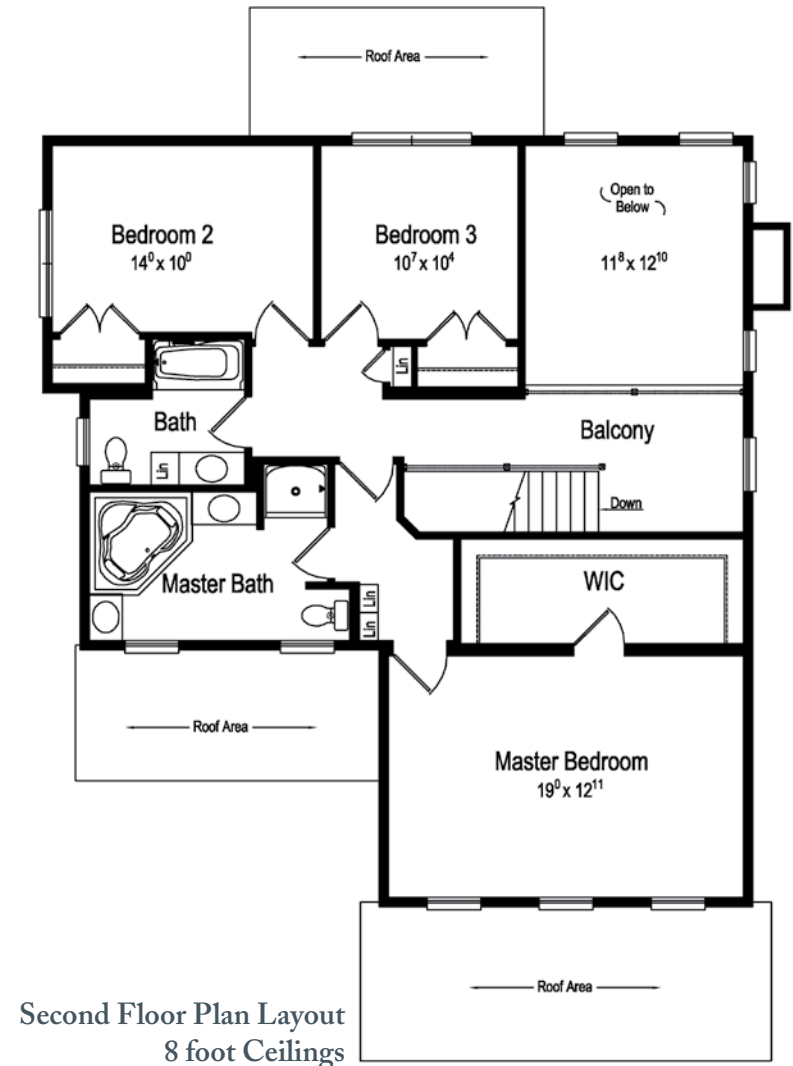
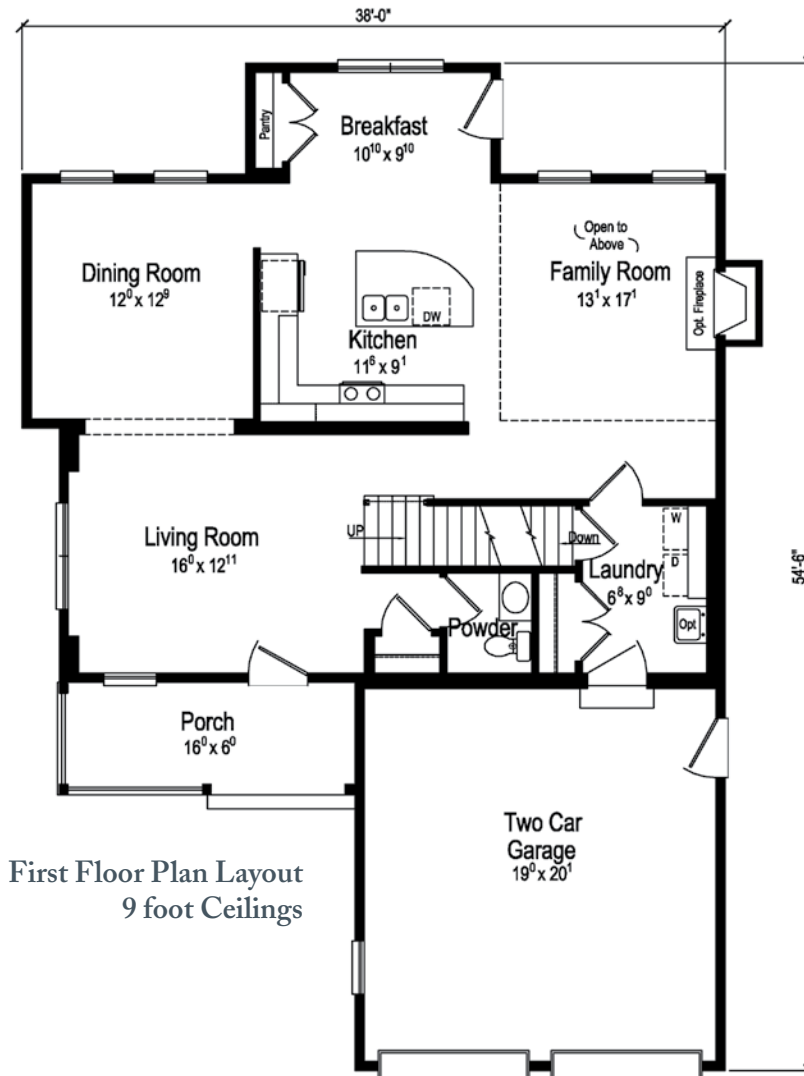
second floor windows and balcony. Enjoy meals informally in the professionally designed eat-in kitchen with a large pantry and oversized center island, or dine in style in the formal dining room. And, of course, Excel Homes offers hundreds of customization options and upgrades to give you the home of your dreams.

PLAN: RICHARDS

1st Floor = 1101

2nd Floor = 1293

Total = 2394 S.F.



Excel Homes, LLC.
excelhomes.com

COLUMBIA
HOME SOLUTIONS

Hudson Valley Home Builder Since 1985

www.Columbia-Home-Solutions.com

Builder / Dealer
of

