



OPEN FLOOR PLAN FOR PEOPLE ON THE GO

The stylish comfort of the Stiles home plan makes it an attractive option for today's active family. With 4 bedrooms and 2½ baths, its open floor plan in classic American design provides a two-story foyer with a vaulted ceiling, display shelves and arched entryways. A formal dining room is graced with an arch detailed accent wall, while the first floor study features a bay window.

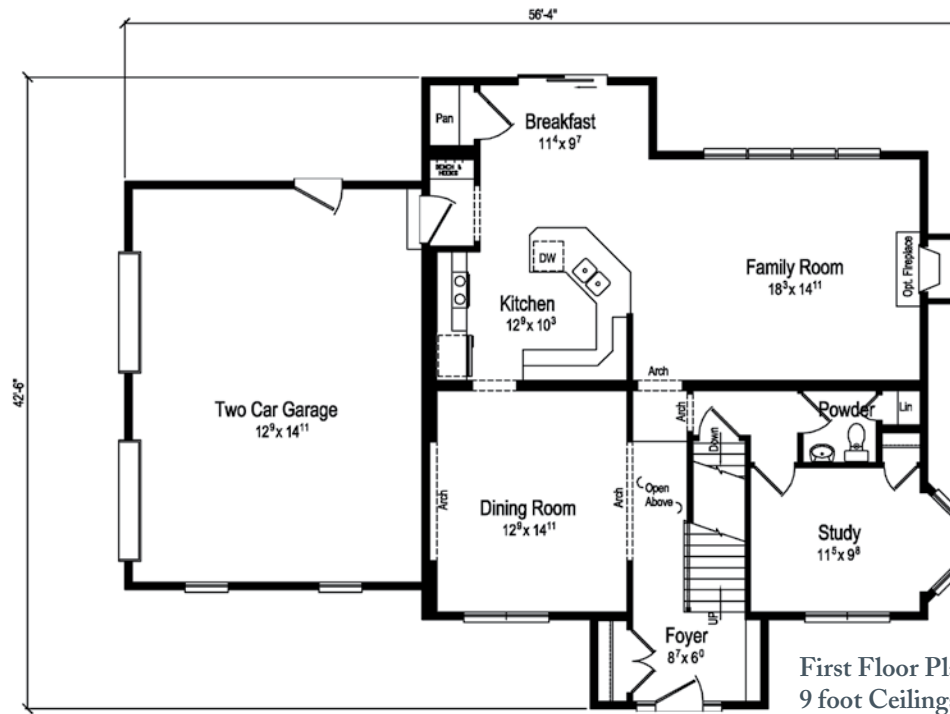
A second floor laundry saves time and the spacious master bedroom offers a sitting area for cozy chats. Rounding out the amenities are a professionally designed eat-in kitchen with pantry and built-in bench with a coat rack at the entry to the two-car garage. And, of course, Excel Homes offers hundreds of customization options and upgrades to give you the home of your dreams.

PLAN: STILES

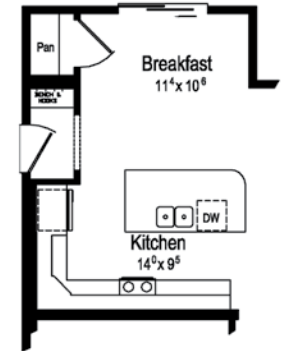
1st Floor = 1235

2nd Floor = 1518

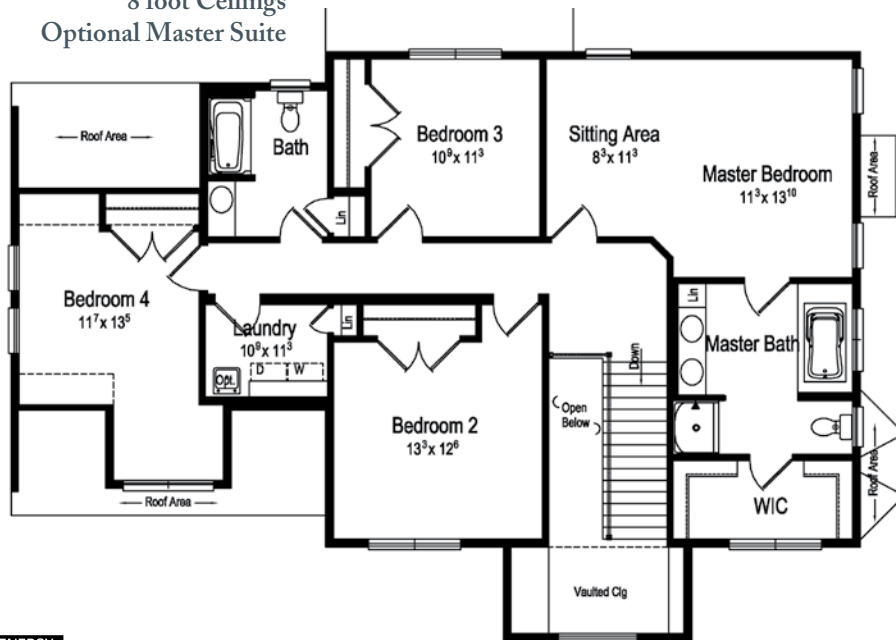
Total = 2753 S.F.



First Floor Plan Layout
9 foot Ceilings
Optional Kitchen



Second Floor Plan Layout
8 foot Ceilings
Optional Master Suite



COLUMBIA
HOME SOLUTIONS

Hudson Valley Home Builder Since 1985

www.Columbia-Home-Solutions.com



Excel Homes, LLC.
excelhomes.com

Builder / Dealer
of
excel
HOMES