



TIDEWATER HAS ROOM TO ROAM

With its first floor master suite and three large upstairs bedrooms with walk-in closets, the Tidewater is a great family home. Presented in a traditional farmhouse style, it comes with 3½ baths, a separate study with optional fireplace, two-car garage, large

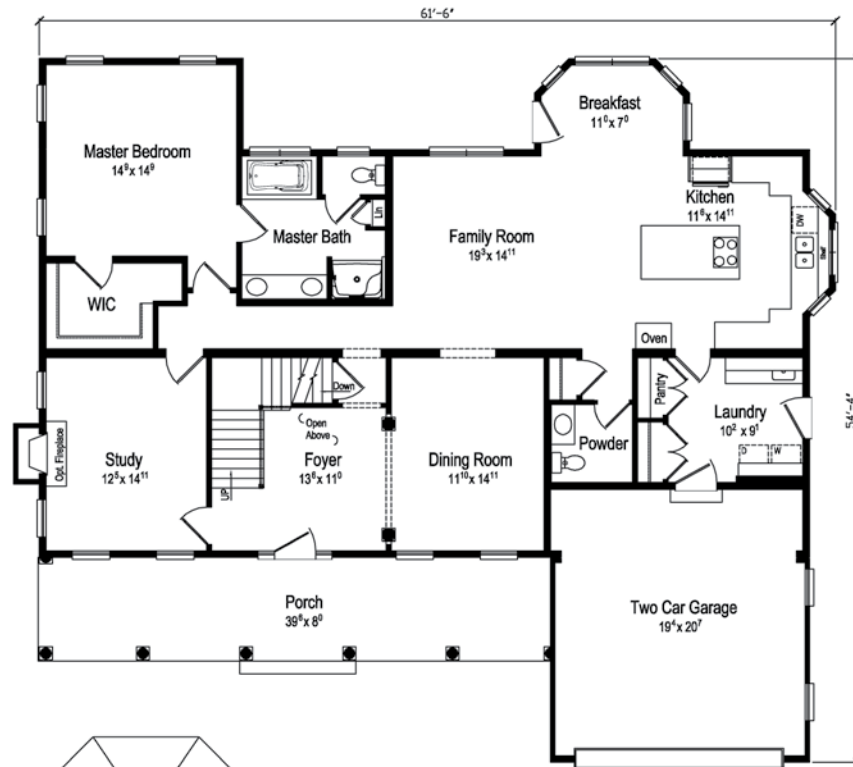
formal dining room and professionally designed eat-in kitchen with oversized center island, separate cooktop and oven, and large storage pantry. And, of course, Excel Homes offers hundreds of customization options and upgrades to give you the home of your dreams.

PLAN: TIDEWATER

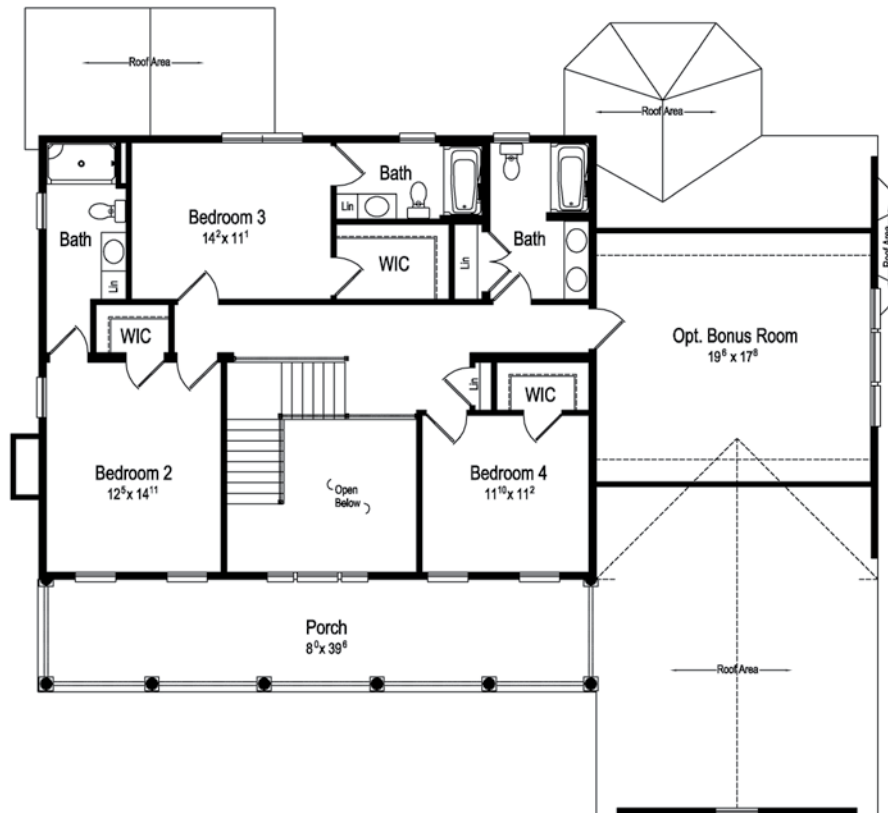
1st Floor = 1989

2nd Floor = 1150

Total = 3139 S.F.



First Floor Plan Layout
9 foot Ceilings
Optional Master Bath



Second Floor Plan Layout
8 foot Ceilings

COLUMBIA
HOME SOLUTIONS

Hudson Valley Home Builder Since 1985

www.Columbia-Home-Solutions.com

Builder / Dealer
of
excel
HOMES



Excel Homes, LLC.
excelhomes.com