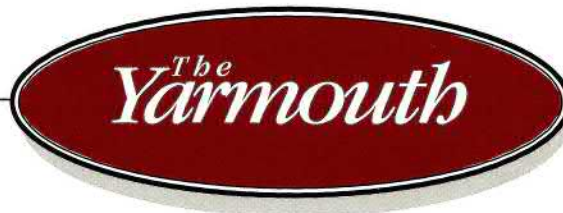
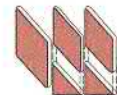
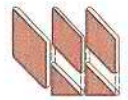


WESTCHESTER MODULAR HOMES

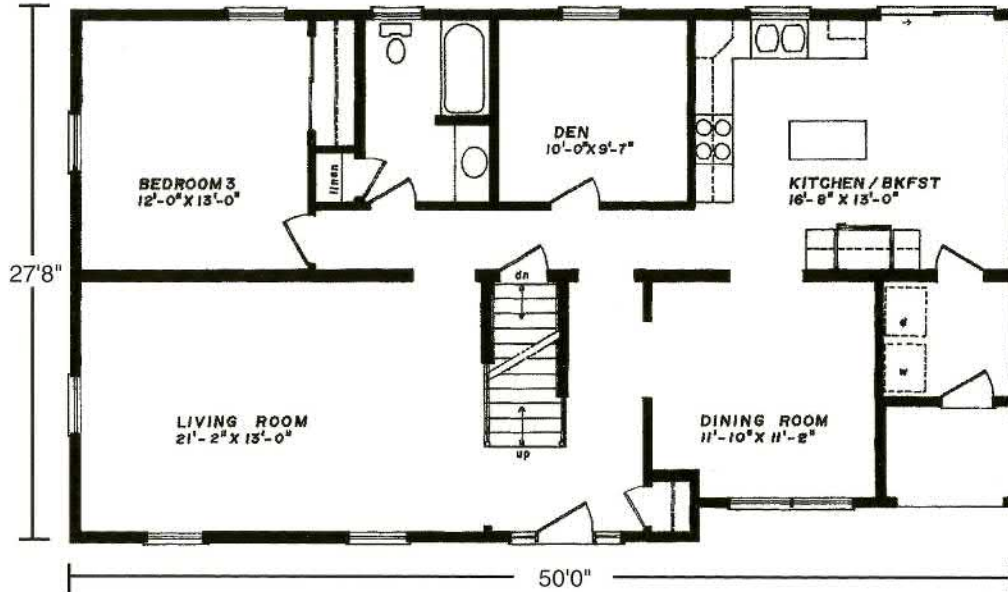




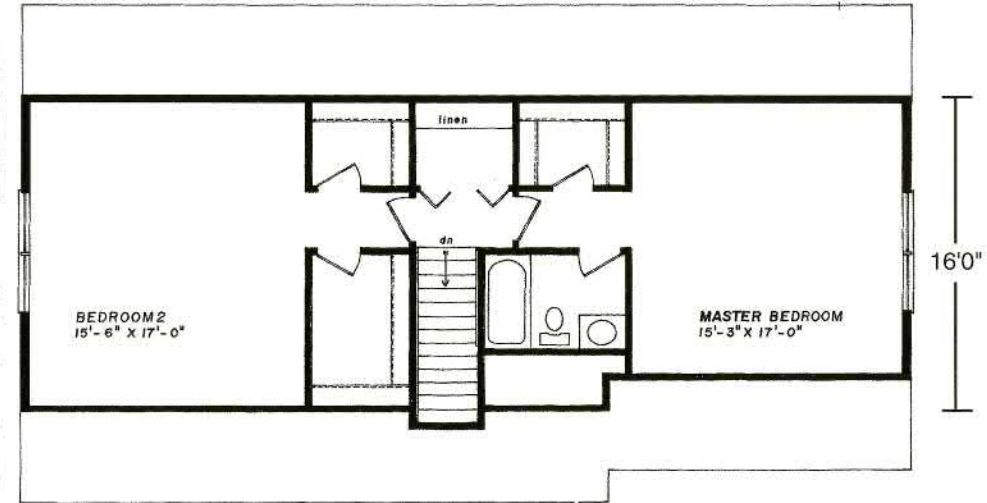
27'8" x 50' • 1400 Sq. Ft. (includes Covered Porch)
 Unfinished Second Floor 16' x 50' • 800 Sq. Ft.

Westchester Modular Homes

First Floor



Second Floor (Suggested Layout)



Go to: www.Columbia-Home-Solutions.com for more info

Standard Yarmouth Features

- Spacious First Floor Bedroom and Den
- Unfinished Second Floor for Future Expansion to include 4 - 3046 Windows; Wall Panels and Door for Top of Stairs
- Formal Dining Room
- Formal Living Room
- Large Kitchen Island and Breakfast Area
- "Cottage-Style" 3056 Lower Level Window on Front
- Separate Utility Room
- Covered Porch
- Fireplace Options Available
- "Boxed-Out" or "Angle-Bay" Options Available
- Consult an Authorized Westchester Builder for a Complete List of Options
- Photos and Floor Plan Dimensions are approximate. All specifications must be Written in the Contract. No oral conditions.



We Build Green!

Featuring High-Quality Andersen® Products



Hudson Valley Home Builder Since 1985

www.Columbia-Home-Solutions.com



1094 County Rt 6
 Germantown, NY 12526
 518-537-68888