

# WESTCHESTER MODULAR HOMES



Shown with optional porch package.

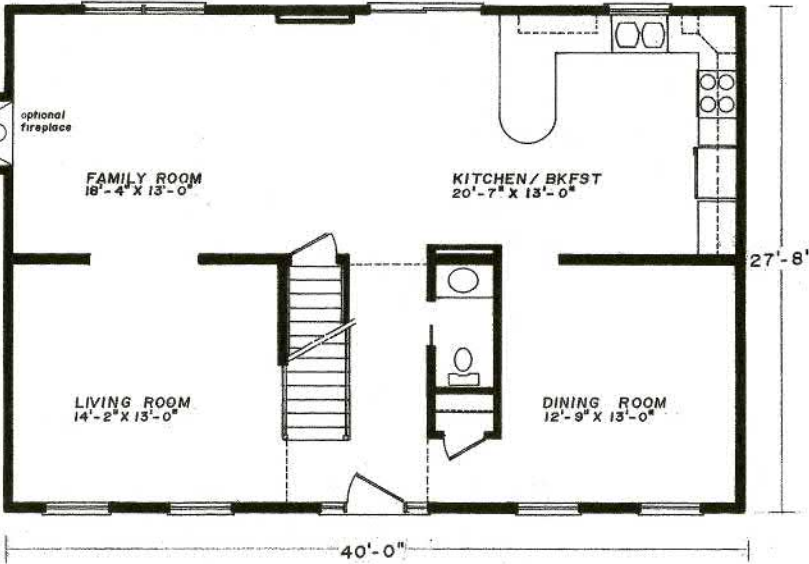
Shown with optional two car garage and porch package.



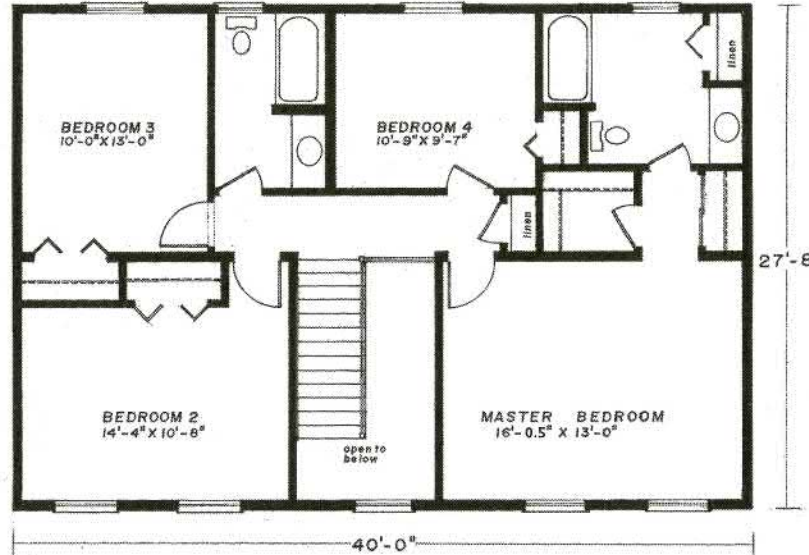


27'8" x 40' • 2240 Sq. Ft.

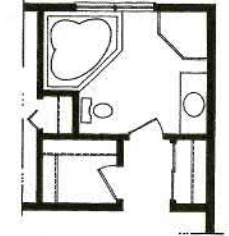
First Floor



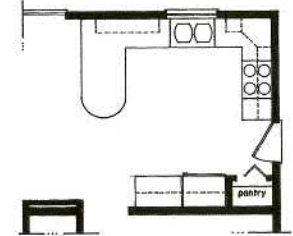
Second Floor



Optional Master Bath



Optional Kitchen



Columbia Home Solutions - Hudson Valley Home Builder since 1985 - [www.Columbia-Home-Solutions.com](http://www.Columbia-Home-Solutions.com)

## Standard Yorkshire Features

- 4 Spacious Bedrooms
- 2 1/2 Baths
- Open Two-Story Entry Foyer
- Formal Dining Room
- Formal Living Room
- Spacious Kitchen features Breakfast Bar with Radius Overhang Top
- "Acorn" Pediment on Front Door
- "Cottage-Style" 3056 Lower Level Windows with Architraves on Front
- Fireplace Options Available
- "Boxed-Out" or "Angle-Bay" Options Available
- Consult an Authorized Westchester Builder for a Complete List of Options
- Artist's renderings and Floor Plan Dimensions are approximate. All specifications must be Written in the Contract. No oral conditions.



We Build Green!

Featuring High-Quality Andersen® Products



Hudson Valley Home Builder Since 1985

[www.Columbia-Home-Solutions.com](http://www.Columbia-Home-Solutions.com)



1094 County Rt 6  
Germantown, NY 12526  
518-537-6888